

TOFT VILLAGE CALENDAR

November 2025



DIARY DATES

The Parish Council

The next meeting will be Monday 3rd November at 7.00pm in the People's Hall.

All welcome.

Toft People's Hall Management Committee AGM

11th November at 8.00pm

Friendship Club

12th November at 2.30pm

Simon Shore & Neville Tait
New Zealand

St Andrew's

Christmas Fayre
Saturday 29th
November
10.30 - 12.30

Toft Choir and Toft Session

Christmas Concert
on Saturday 13th
December at 4pm at
St Andrew's Church

Editorial

Our regular correspondent Robert Longhurst of School Lane offers us two items for this month's Calendar. One is a whimsical painting (see the online version of the Calendar for a colour version) of Toft Village Green as it might have looked in Victorian times, with men and women resplendent in a variety of hats, a sheep-drive on the Comberton Road, the Maypole in full swing, a cake stall and a dahlia stall. Farm labourers, a children's nanny and posh people complement the panorama.

It is Toft re-imagined. And yet all of its elements have existed at one time or another or do still exist. Sheep drives through the village happened right up till 1990, the late Brian Mitchell's dahlias attracted buyers from miles around, Toft cakes are legendary and the Maypole still turns at the annual Spring Feast.

Not anymore do we see farm labourers chatting on the green (or in front of Toft shop as they did in later years); machines do the heavy lifting now. However, we have in Toft a healthy elderly population of good old tough country people in their 80s and 90s for whom Robert Longhurst's painting may well represent the bank of memories they carry with them.

Time passes and things come and go. Robert's second item in this month's Calendar is a tribute to the Toft Fireside, an institution founded more than 70 years ago, which survived decades of social change but which fell victim to the 2020 lockdown and, more seriously, to the closure this year of the Methodist Chapel, where hundreds, no, thousands, of Toft residents over the years listened to lectures by eminent speakers on a veritable encyclopaedia of topics and enjoyed the food that was served before the talk. Like Robert's painting, it is part of our collective memory as a village community. Robert hopes Fireside will be revived. So do we.



This month we have illustrated some of our articles with snippets of embroidery from the large pictures at the village hall, made by members W.I. in Toft.

THE CHURCH IN TOFT

St Andrew's Parish Church

Assistant Curate

Revd Barnabas Leeke 07787 800 888

Lay Minister

Mrs Barbara Preece 263466

Churchwardens

Mrs Ann Mitchell 262516

Mrs Elizabeth Dolman 262574

Deputy Wardens

John Quenby 263949

Jean Verney 263557

SERVICES OF WORSHIP

2nd November

8.30am Holy Communion (BCP)

Revd Prof. Michael Reiss

11.00am A celebration of All Souls – Morning Prayer

Mrs Cathy Michell

9th November REMEMBRANCE SUNDAY

10.30am Service at Memorial outside Methodist Church, continuing at St Andrew's with the silence at 11.00am and the remainder of the service

Mrs Ann Mitchell

16th November

8.30am Holy Communion (BCP)

Revd Prof. Michael Reiss

11.00am Holy Communion

Revd Barnabas Leeke

23rd November

Christ the King Comberton Leisure

10.30am West Cambridge Churches Ecumenical Service

30th November

8.30am Holy Communion (BCP)

Revd Barnabas Leeke

10.30am Lordsbridge Team Holy Communion at

St. Mary's Hardwick

There will be morning prayer at St Andrew's every Wednesday at 9.30am.

Also on Wednesday evenings at 8.00pm, via Zoom a service of compline: ID: 899 215 191 or follow the link: <https://us02web.zoom.us/j/899215191>

Zoom services available at 11.00am on Sundays.



REMEMBRANCE OF TIMES PAST

As I write this, the clocks have not gone back, the warm hub has not yet returned but autumn it is. Even with the gloom of grey skies one can be enchanted by the colours of the trees and the amazing pyracanthas are still laden with brilliant orange and yellow and the juice of blackberries stains the pavements.

But it is November; by the next Calendar it will be Advent and the beginning of the countdown to Christmas. We have an erratic pattern of services, beginning with All Souls for those who would like to remember those who have gone before, whom we miss. On a larger field Remembrance Sunday, in the year that we have given thanks for VE and VJ day and the end of World War II. In this 'Thankful Village' we have no villager to remember from World War I and but three from World War II.

But war did not stop then, as the news sadly constantly reminds us. Every year since 1921 the Royal British Legion (RBL) distributes paper poppies in November to raise vital funds to help today's Armed Forces community. And it wouldn't be possible without incredible supporters.

Every year they lead the nation in commemorating and honouring those who have served and sacrificed.

They remember those who lost their lives on active service in all conflicts, from the beginning of the First World War right up to the present day, as well as all those who have served and their families. They provide lifelong support to serving and ex-serving personnel and their families. The support starts after one day of service and continues through life, long after service is over.

From providing expert advice and guidance, to recovery and rehabilitation, through to transitioning to civilian life, the RBL can be by their side every step of the way. And it's not just members of the Armed Forces but their families too. If there is ever a reason they can't help, their vast network will mean that they know someone who can.

So as we remember those who have died however long ago, maybe these three poets say it all: John Keats *A thing of beauty is a joy forever: Its loveliness increases; it will never pass into nothingness*; Henry Wadsworth Longfellow *He spoke well who said that graves are the footprints of angels* and Emily Dickinson *Unable are the loved to die, for love is immortality*.



CHURCH IN TOFT DIARY



St Andrew's

CHRISTMAS FAYRE



Saturday 29th November 10.30-12.30

Look out for our elves and all the details in the Christmas circular.

A series of four Advent Course mornings are to be held, starting on 27th November from 10.30 - 12 noon. More details in Christmas circular and the next Calendar.

WELCOME BACK to the WARM HUB
from 27th October every Monday



Come and join us for chat, games, friendship and refreshment, all for free.

We'll meet every Monday, from 10.00 to 12.00 at Toft People's Hall.

We would love to see you there -
you'll be guaranteed a warm welcome.

Feel free to bring a friend.



Friendship Club

12th November at 2.30pm in the People's Hall
Simon Shore & Neville Tait will give an illustrated talk about New Zealand

TOFT PARISH COUNCIL

Who is on the Council?

The Parish Council is comprised of a Chair and Deputy chair and five other councillors, all of whom are volunteers. Currently these members are:

	Phone	E-mail
Chair:		
Martin Yeadon	263663	cllr.yeadon@tpc.toft.org.uk
Deputy:		
Elaine Miles	262255	cllr.miles@tpc.toft.org.uk
Avril Coghlan		cllr.coghlan@tpc.toft.org.uk
Emma Darbyshire	07763 463234	cllr.darbyshire@tpc.toft.org.uk
Rebecca Harris	07796 176333	cllr.harris@tpc.toft.org.uk
Giles Harrison		cllr.harrison@tpc.toft.org.uk
Sarah Tebbit		cllr.tebbit@tpc.toft.org.uk

Clerk:

Ben Stoehr 01954 210241 clerk@tpc.toft.org.uk

The Parish Council represents the residents of Toft and aims to support the welfare and interests of its residents and businesses. Each council member takes responsibilities for specific areas covering Highways, Health and Safety, Footpaths, Lot Meadow, The Recreation and Playground area, The Allotments, Climate Change, The People's Hall, the Defibrillator, and Welcome Packs.

(This summary can be found on the Parish Council website: <https://tpc.toft.org.uk>)

Next Meeting: The next meeting will be Monday 3rd November 2025 at 7.00pm in the People's Hall. All welcome.

The Council met on Monday 6th October 2025 in the People's Hall.

The minutes of the last meeting were approved.

Unfortunately, there has still been no response either from Highways or the County Councillor regarding the overgrown cycleway, which has been repeatedly reported by Cllr Darbyshire. We will continue to pursue this matter.

Cllr Tebbit is still awaiting responses regarding the possible installation of a climbing wall in the children's playground.

Prior to the meeting, Cllr Yeadon had circulated to councillors a map of the streetlight problems in Toft with possible solutions, which is to be forwarded to the appropriate authority unless there were any issues raised by councillors.

Cllr Miles reported having seen a dog walker who had parked his van at the top of Miller's Road and released 11 dogs onto the footpath, most of which were not on leads. It was agreed by all that no individual could manage to keep 11 dogs under control or pick up after them. She also pointed out that she knew of at least two dog walkers who came to Toft who behaved

professionally and responsibly. She is to find out if there is a local by-law restricting the number of dogs an individual can walk so the Parish Council can take appropriate action. In the meantime, temporary notices are to be erected and Cllr Darbyshire will explore the costs involved in purchasing permanent signs.

Cllr Yeadon informed the meeting that he and Cllr Harrison had fitted foam into all of the musical instruments in the rec. It hasn't made a significant difference but has dampened the sound. The next stage is to progress the climbing wall, which we may install and that would be behind the instruments.

Regarding the youths who are creating noise and disturbance by riding around villages on motorcycles, Cllrs Darbyshire and Tebbit reported that they had been in touch with Comberton PC, who are willing to work with Toft PC to try and identify these youths and prevent them continuing in this antisocial behaviour.

Regarding the request for a new public noticeboard at Birdlings, there has been no response from the organisation which is responsible for the management of the site.

The grassing of the Queen's Platinum Jubilee area will take place when the conditions are right for sowing grass seed.

The request for reimbursement of repair expenses for the communal half-barrel BBQ was approved. It was noted that this amenity could also be used by individuals if they are having a large gathering.

It was agreed that the quote received from SCDC for the removal of two open bins was acceptable.

It was decided not to make a donation to MAGPAS. Worthy as it is, it was felt that there are many charities which might request money from the Parish Council and it was pointed out that we make donations only to charities that directly benefit the village. An example would be The Woodland Trust, which manages Toft Wood, an amenity which is enjoyed by the whole village.

The Finance Report was considered and the payment of bills approved.

Cllr Harris continues to monitor the children's recreation ground but there were no Play Inspections to consider.

Under Health & Safety, a parishioner had reported that the new bench near the allotments had blown over in the recent gales and Cllr. Harrison is to have a look at it and assess whether it requires more solid fixtures.

It was reported that a number of parishioners have been complaining about the speed of cars along the High Street and it is a matter of great concern. Cllr Darbyshire is to check whether our request for a 20mph restriction is likely to be accepted. It was also agreed that the PC would investigate the costs involved in having a speed camera erected along the High Street. In the meantime, it was agreed that a letter should be sent to Comberton Village College to urge them to request school buses to observe the speed limit. It was also agreed that some signs should be put up requesting drivers to slow down and it was pointed out that often

signs made by children were more effective. As such, a request for children to produce signs is to be put in the Calendar.

It was agreed to continue with our current Insurance company and also the grass-cutting company.

It was reported that South Cambs DC had noted that the Methodist Church has now been recorded as an Asset of Community Value.

The one tree works application was approved. It was suggested that home owners that remove a tree should be encouraged to plant another one, either in the ground or a pot. This proposal is to be passed onto the SCDC tree officers.

Cllr Darbyshire referred back to the cycle path and was supportive of pressure being put on the landowner to cut back hedges. She also reported that UK Power networks were to send out an engineer to examine the problem with trees on Brookside affecting overhead cables.

Cllr Coghlan reported that a number of residents at the Birdlings were concerned that the footpath from opposite the lay-by down to the golf course was not listed on EWR maps. Cllr Yeadon agreed to investigate

the issue. Cllr Yeadon reported that the next significant action from EWR will be to issue a 'You Said, We Did' report in November with the next EWR consultation being in April/May next year. It was noted that there is a delay in the development due to the proposed Universal Studios near Bedford. Cllr Yeadon had attended a meeting with Pippa Heylings MP, EWR and other parish councillors, where the case was, again, made for the northern route and the business case was challenged. Pippa Heylings has been having discussions with the Transport Secretary and the Trains Minister asking for the business case to be reviewed.

Cllr Yeadon reported that a parishioner is keen to start the Speedwatch group again, which the PC was supportive of. Cllr Harris is to contact the police regarding the possibility of having a radar van positioned in High Street and a speed camera.

Cllr Yeadon reported that the District Council no longer ran the Village Hero Scheme and suggested that Toft Parish Council should run its own. This was unanimously supported and a notice is to be put in the Calendar requesting nominations.

The meeting closed at 8.45pm.

Calling all children to get creative

Everyone knows the traffic along the High Street in Toft goes far too fast and we don't want any accidents!

The Parish Council keeps trying to get cars to travel more slowly but we haven't managed yet. However, we believe that some signs drawn by children might get the message across. Here are examples of signs done by a local child.



If you can create a 'SLOW DOWN' sign for our High Street, please send it to Becky Harris, cllr.harris@tpc.toft.org.uk or leave in the porch at Firs Farm, High Street, Toft. Thank you, Toft Parish Council

Make sure you're protected this winter

NHS Cambridgeshire & Peterborough are urging anyone eligible for their COVID-19, flu, RSV or pneumococcal vaccines to make sure they've had them this winter. Each vaccine has slightly different eligibility criteria:

- RSV vaccine – for anyone who is pregnant, aged 75-79, or anyone who turned 80 years old from 1 September 2024.
- Pneumococcal vaccine – for anyone 65 or over (only one dose is needed).
- Flu vaccine – for anyone who is aged 65 or over (including those who will be 65 by 31 March 2025), has certain long-term health conditions; is pregnant, lives in a care home, is the main carer for an older or disabled person or receives a carer's allowance, or lives with someone who has a weakened immune system.
- COVID-19 vaccine – for anyone aged 75+, anyone aged between six months and 74 years and has a weakened immune system because of a health condition or treatment, people who live in a care home for older adults.

For some people who have got used to having their COVID-19 and flu vaccine together in winter, this might mean a change for them as the COVID-19 vaccine age criterion has changed from people over 65 to people over 75.

To find out more about these vaccines, and how to book them, or to find a walk-in clinic, please visit The Vaccinators website <https://www.cpics.org.uk/the-vaccinators>

Charity for those in Need

Though long considered a poor village there were several instances where individuals in Toft made charitable donations to support those in need.

In around 1730 William Eversden gave £6 to buy one acre of land in trust to provide allotments. The income from the land averaged seven shillings per year before enclosure came to Toft around 1815. Further land was then allotted to the charity and the income increased to £1 11s. a year. The allotment income initially supported distribution of bread to the poor at Easter. This later switched to paying out small sums to the poor in proportion to the size of their families. In 1837 the Charity Commissioners recommended that the distribution of bread be resumed, preferably to those not already receiving poor relief.

John Preston, a former rector of Toft, gave £500 in trust in 1827 towards the education of the poor children of Toft and Caldecote. At the time there was no longer a school in either village but interest on the funds accumulated over time, allowing the trustees to purchase a building in Toft in 1833, which became a schoolmaster's house. An adjoining workshop became

a schoolroom for village girls and this was enlarged in 1846 with an additional room built for the boys. As well as the income from the Trust, there was originally a charge of one penny a week for each pupil. The school finally closed in 1959 as the pupils moved to Comberton, with the old building later becoming the People's Hall.

In 1933, Joseph Warboys gave a sum of £100 in trust, the income from which was used to distribute coal to those in need each year in early December. In 1961 the revenue from this charity was reported as £2 13s. 8d., which the rector of Toft distributed at a rate of 3s. 6d. a hearth. In 1962 the income from the land purchased by the William Preston Trust for use as allotments was yielding £3 a year.

By the end of the century it was recognised that both these Trusts were generating insufficient funds to credibly continue supporting grants and eventually it was decided to close both charities. This was readily achieved with the Joseph Warboys Trust but land registry problems resulted in the William Eversden Trust being retained, though with new management rules. This, with support from the Parish Council, has allowed the site to be renovated and the allotments to continue to be a part of Toft community life.



MACMILLAN COFFEE MORNING SUCCESS

On Wednesday September 24th, the Toft Schoolroom Café gave way to a fundraiser for Macmillan Cancer Support. As usual, the people of Toft and round about donated incredibly generously and ate prodigious amounts of cake, recognising the value of the important support which this charity provides for people affected by cancer and their families. A raffle and quizzes organised by Liz Tomes added to the fun, raising an amazing £165, and donations via a stall set up by the Knit and Natter group all contributed to raising a grand total of £912.

Many thanks are due to all the organisers, cake bakers and soup-makers and of course the customers for making this such a fun and successful event.

Postscript

If you enjoyed being a part of this event, the regular Wednesday Café in the People's Hall would welcome more helpers, including people willing to bake or soup-make on a regular basis once a month, and especially people willing to help serve food and drinks on the day. Even a modest couple of hours once a month would make a big difference towards keeping this popular facility running. For more information, just contact any of the volunteers at the Café on a Wednesday morning. Thanks!

JAM JARS

Toft's champion jam-maker, Peter Johnson, has asked us to publish this request:

The time is approaching when I will be making marmalade for the year. Unfortunately, I will have insufficient jam jars and would request that jam jars that I have provided are returned to Toft Shop. Further, if anybody has spare empty jam jars of approximately one pound capacity, then these can be left at Toft Shop. I do have spare lids to replace any that are missing or damaged.
Many thanks Peter



Nature Diary

Just as summer was fading away, but long before autumn was established, our winter friends returned from wherever they'd been - perhaps simply lurking in the bushes during their annual moult, but certainly out of sight. Now, the merry band of sparrows that inhabits my hedge during the colder months keeps me entertained each morning as they push one another out of the way to get



to the feeders.* And overhead one of the two robins - one at the front, one at the back - daily proclaims his (or her) territory, which for them is my garden, where there's food, water and shelter a-plenty. Sadly, I recently found a sparrow lying dead in the garden and on close inspection it had two large engorged ticks attached to its neck - I guess they had bled the poor thing dry.

Other creatures are busy, too. Squirrels and smaller creatures this year have an abundance of nuts and seeds to tuck away for the winter and there's much evidence around the village that badgers have been enjoying the fruits of the hedgerow too - their black, seed-filled droppings are quite distinctive.



Everywhere the crunch of acorns and conkers can be heard underfoot and earthy scents of autumn fill the air. Here, in the UK, we're so lucky to experience the changing seasons and all the variations that each one brings. Wild creatures, though, have to adapt to those changes, this year exacerbated by the lack of water - so do please remember to keep filling birdbaths and bowls to help them all. They will repay us with their presence.

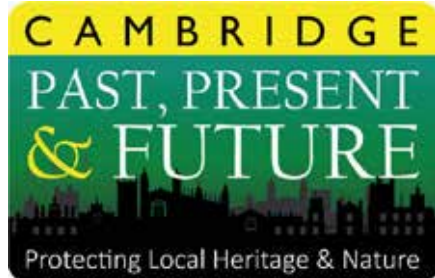


* If you buy bird food regularly, recommended is Two Pots Farm, on the old A428 going towards Cambourne, just beyond the turning to Childerley. Very reasonable prices on all sorts of bird food.



Several years ago Linda Hollow had a great idea - to send our local Christmas greetings via the Toft Village Calendar. Over the years the number of participants has steadily grown and we now produce four beautiful, colourful pages of Christmas greetings, which helps greatly towards the cost of producing this Village Calendar. Spaces sized 42 x 92mm (see example above) cost just £15. You can send me your own design, landscape or portrait, or I could create something for you if you wish.

To book your space this year, please email to the address above as soon as you can as these pages take time to format. **The deadline is 17th November** but if you wait, there may not be space. Bank transfer is the preferred and easiest way to pay. (The bank now makes it difficult for us to pay in cheques.) If you are not happy with internet banking, you can pay with cash and details of how to pay will be sent to you when you are happy with your greeting.



Coton Orchard Busway Inquiry

The Coton Orchard public inquiry is underway and our team is making the case for an alternative route for the Cambourne-Cambridge Busway, to avoid a new road being built through Coton Orchard wildlife site. <https://cambridgeppf.org/coton-orchard-busway-inquiry-underway/>

enquiries@cambridgeppf.org

An apology

Gill Pugh has asked us to print an apology following the publication of her poem in the October edition of the Calendar. The poem dealt with the frustrations of buying unripe fruit, compared with the varieties available home-grown or in Lot Meadow. Gill would now like to make it clear that this was in no way intended to refer to fruit bought in our own Toft Shop and apologises for any confusion this may have caused. Gill added that it would have been more appropriate to refer to supermarket-bought fruit, but this did not fit into the poem.



**Wildlife Trust for
Beds, Cambs
& Northants**

Update for November

Sustainable gifts

The Wildlife Trust BCN are very keen to encourage people to be more sustainable. The more things we buy, the more energy is needed to make them and move them, which contributes to climate change and affects local wildlife. Consider buying good quality gifts that will last, think about packaging, make something with upcycled materials and give something that will be cherished.



**CAMBRIDGESHIRE
FIRE & RESCUE SERVICE**
Working together to improve community safety

Disposing of batteries safely

Batteries can be a fire hazard if they are not disposed of properly. They should never be put in household rubbish or recycling bins.

During the processing of waste or recycling, a battery can be compacted and damaged, which can lead to ignition of the highly reactive lithium, leading to a fire starting.

Any kind of battery can cause a fire if not disposed of correctly and safely. This includes vapes or other e-cigarettes as well as standard batteries.

Fires involving batteries cause damage to refuse vehicles and roads, as well as significant delays to bin collections and road closures.



How to dispose of batteries

There are many places to safely dispose of batteries. As well as local recycling centres, many shops around the county have collection bins in-store.

To find your nearest battery collection bin, visit either <https://www.recyclenow.com> or <https://www.recycleyourelectricals.org.uk> to check where your closest location is.



Wildlife Trust for
**Beds, Cambs
& Northants**

Friday 28th November

3-7pm

Christmas

Fair

**Artisinal
Gifts**

Crafts

**Mulled
Wine**

**The Manor House
Cambourne, CB23 6DH**

wildlifebcn.org/events

Registered charity No. 1000412

FAREWELL TO FIRESIDE

In 1970 we moved to the village as a family and soon after began to attend the Fireside lectures at the Methodist Chapel.

The team, led by Ann Mitchell, included Joan Howard, Di Tebbit and others, and they produced a main course, pudding and coffee for something like £2.50. Amazing value for money and they also tried to co-ordinate the meal with the lecture, e.g. a talk on Spain would be accompanied by a Spanish main course. The team were very inventive. Latterly the main course was dropped and just pudding and coffee were served.

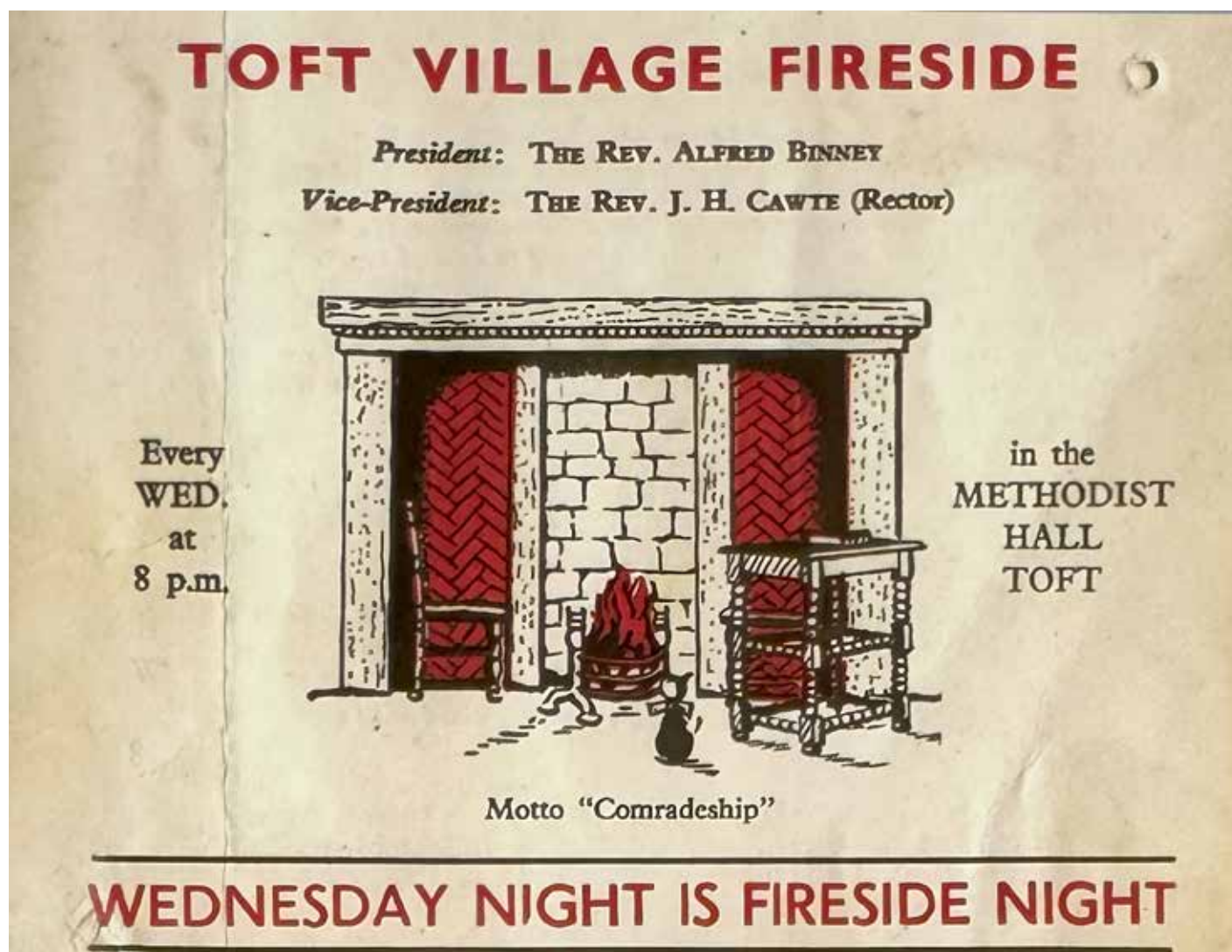
The subject of the lectures varied enormously. Some of those I remember are about woolly mammoths and trilobites, both influenced by Richard Preece trying to create a village of palaeontologists. There followed a wonderful talk on the cuckoo by a renowned expert and a lady gave a talk on Bletchley Park, in which she spoke without

notes. She told us that her husband had encouraged her to attend a ball at Bletchley Park. 'Why?' she asked. 'Because I was there in the war,' he said. 'So was I,' she replied. Neither had broken the Official Secrets Act until 1989, when it no longer applied.

Jane and I gave a talk on the Camino de Santiago in 2002, as did Barbara Preece, Jane Bowden and Cathy Michell a little later on. Add to that list a talk by an ex-Army Officer and bomb disposal expert, who was also a University Constable (now Marshal) at Cambridge University. As you can see, the subjects covered varied tremendously.

The Chapel has now closed after 160 years of serving the village. Fireside is just one of the victims of the closure. It provided a great learning and socialising hub and will be greatly missed. Maybe it will rise again like the Phoenix at some other venue. Here's hoping!

Robert Longhurst (School Lane)



Mr Clifford Tebbit was one of the original founders of Toft Fireside and his tireless work sustained it for decades. The editors extend their thanks to him and all the team that kept it going for so many years.

TOFT CLUB NEWS

The monthly **Board Games Night** returns on Friday 7th after a short break. Come along and try some different games! Doors open at 7pm.

We have our popular monthly **Open Mic Night** on Saturday 8th – an evening of great local music, free entry.

We are holding a **Spanish Food Night** on Saturday 22nd November – see the website for details.

The **Film Club** will be showing the 2024 Film *Midas Man* on Saturday 15th. Starring Jacob Fortune-Lloyd, it tells the story of Brian Epstein, the man who on Thursday 9 November 1961 descended the stairs to a cellar in Liverpool and changed the world forever. Doors open at 7.30pm and the film starts promptly at 8pm. Film Club membership is £12 for the year, or evening membership is £3.00.

All our other regular events take place: **Toft Art** on Thursday 6th, **Toft Quiz** on Thursday 13th, **Carpet Bowls** on Friday 14th, **Table Tennis** on Thursday 20th and **Toft Bingo** on Thursday 27th.

An early reminder: the world-famous **Club Christmas Dinner** will be on Saturday 13th December. Tickets on sale in late November. Saturday 20th December sees the return of the legendary **RicMar Christmas Entertainment!**

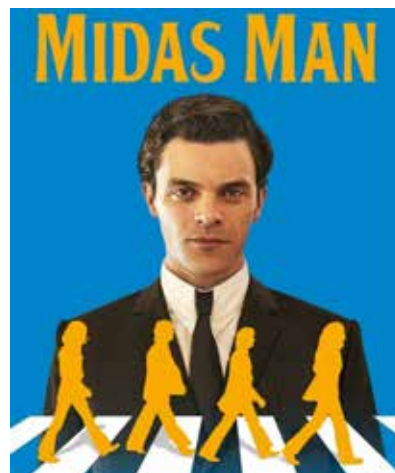
Details next month.

The Club is always open on Thursday and Friday evening from 8pm, plus most Saturday evenings and there is always a warm welcome where you can meet up with friends and enjoy a drink.

Keep up to date here:

Website: <https://toft.club>

Follow us on Facebook: <https://www.facebook.com/ToftSocial>



Rainbows

Rainbows welcomes all girls to come together to laugh, learn and have fun in a creative, safe space.

for ages 4 to 7

Brownies

Brownies is full of firsts: she can explore her creative side, get out into the great outdoors, learn how to look after herself, others and the world we live in.

for ages 7 to 10

Guides

Guides is a fun-filled space, she'll have one big adventure with friends, learn how to be herself, explore the things she loves and try new stuff!

for ages 10 to 14

Rangers

Rangers is an open and relaxed space, where you can regularly meet up, go on trips at home and abroad, to help make a difference to the things you care about.

for ages 14 to 18



We welcome all girls aged 4-18 to join Rainbows, Brownies, Guides and Rangers in **Barton, Caldecote, Caxton, Comberton, Gransden, Hardwick, Haslingfield and Toft!**

Visit our website or contact Emily and Jane for more information

www.girlguiding.org.uk/joinus

toftdistrictguides@hotmail.co.uk

AROUND THE VILLAGES

St Mary's
Christmas Comberton

COFFEE MORNING

29 November
10 am – 12 noon
at **The Village Hall**
Entry £1

Coffee - Mince pies - raffle
leprosy cards - preserves
cakes - books - crafts etc.

Nativity Festival
6th to 7th December
COMBERTON, 11am to 3pm
at **St Mary's Church**

Dust off your old Nativity set
or create a contemporary one,
2D or 3D

And take part in the festival.

stmaryscomberton@gmail.com
for more information and
to register your set.

Please register your set
By 30th November



COMBERTON HERITAGE SOCIETY

Tuesday 25th November at 8pm in Comberton Village Hall, David Oates will give a talk on:

The Man who Moved Two Windmills

Jordan Ison (1890 -1965) a Histon carpenter, undertaker and builder moved a derelict windmill from Ellington, Hunts onto a property at Madingley Hill in 1936. He subsequently moved and restored the fen pumping mill at Wicken Fen, the last of its kind.
David Oates was brought up in Histon.

All visitors most welcome.



HARDWICK

169 St Neots Road, Hardwick
Cambridgeshire, CB23 7QJ

Tel: 01954 210250

Monday - Friday - 8.30 to 10.30am - 4.30 to 7.00pm

Saturday - 9.00am to 11.00am

Sunday - 10.00am to 11.00am

PAPWORTH

Unit 1, Pendrill Court, Ermine Street North
Papworth Everard, Cambridgeshire, CB23 3UY

Tel: 01480 831615

Monday, Wednesday, Friday - 11.30am to 1.30pm

Saturday - 12.00pm to 1.30pm

Consultations by Appointment Only

www.ashcroftvet.co.uk



Providing expert treatment in all
aspects of foot healthcare in
the comfort of your own home

Nail Cut • Callus • Athlete's Foot

Hard Skin • Corn Removal

Fungal Infections • Plantar Faciitis

In-Growing Toe Nail • Orthotics

Leg and Foot Massage

To book your appointment call Andrina on

07966 571 686

or email: andrinab@foot-care.co.uk

www.foot-care.co.uk

Andrina Baldock, Foot Health Practitioner, SAC Dip. FHPP FHPT
Register for Foot Health Practitioners Member

PEASGOOD & SKEATES

THE FAMILY FUNERAL SERVICE

*All types of funeral carried out
with the highest standard of service and care*

617 Newmarket Rd
CAMBRIDGE
01223 415255



164 Histon Rd
CAMBRIDGE
01223 791060



**Also at Sawston, Duxford, Haverhill
and Saffron Walden**

Ask us about Funeral pre-planning and "My Funeral Wishes"

www.peasgoodandskeates.co.uk



Little Hands Nursery School - Bourn
Short Street, Bourn

A private Nursery School specialising in quality preschool care and education for the under fives |
High staff to child ratio, using an individual child centred curriculum
Flexible booking system for the 08.30am - 4.30pm nursery day
Optional holiday clubs available

We accept nursery funding giving 15 hours per week of funded nursery sessions
for all 3 and 4 year olds and eligible 2 year olds plus 30 funding for eligible families

For further details contact:
Pam Marsden: nursery manager 01954 710656
E-mail: lh.bourn@gmail.com

Little Hands is also at Linton, Melbourn and Newton, visit the website at
www.littlehands.co.uk



As well as the usual cornucopia of goods found in a traditional Village Shop and Post Office, Toft Shop stocks a variety of local East Anglian specialities including homemade cakes, preserves and jams, locally baked breads including croissants and sourdough. We also offer a great range of herbs and spices as well as a huge greetings card selection and have East Anglia's largest selection of South African food.

Shop Opening Hours:	Post Office Opening
Mon-Tues: 7am - 6pm	Mon-Tues: 7am - 6pm
Wed: 7am - 1pm	Wed: 7am - 1pm
Thur-Fri: 7am - 6pm	Thur-Fri: 7am - 6pm
Sat: 7.30am - 2pm	Sat: 7.30am - 1pm
Sun: 7.30am - 1pm	
Closed Bank Holidays	

info@toftshop.co.uk or call us on 01223 262204

Steamroller Ironing Services



Free pick-up and delivery
24/48 hr turnaround
Price: 1lb = £1.75. Minimum = £15
Established 2002
07742319631
01954 210672

Rothwell's Carpet Cleaning

Carpet Cleaning & Stone Floors, Upholstery, Rugs *A few points that make us stand out,*

Rothwell's has been in business since 1993
We're an honest local family firm.
Our large truck mounted machines mean more
cleaning & drying power for excellent results.
Members of both the NCCA and TACCA.
We will move the furniture.
100% satisfaction or it's FREE.



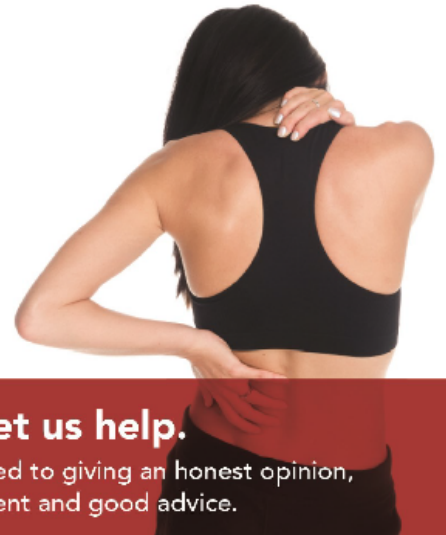
*Call Oliver and Max Campbell
for expert help today.*

01223 832 928 www.Rothwells.biz



CAMBOURNE **OSTEOPATHS**

Back Pain
Neck Pain
Joint Pain
Headaches
Muscle Spasm
Sports Injuries
Arthritis
& much more



In Pain? Let us help.

We are committed to giving an honest opinion,
effective treatment and good advice.

Appointments Mon-Fri
01223 598558

Regus, 1010 Cambourne
Business Park, CB23 6DP

Book online: www.cambourneosteopaths.com
Email: practice@cambourneosteopaths.com

CHIMNEY SWEEP

J.L. Wight

Guild of Master Sweeps

**Advice given/
Problems solved**



Certificates issued



01954 253315

www.camsweep.co.uk

9 Cow Lane, Rampton, Cambridge CB24 8QG



Cambridge Villages **Physiotherapy**

Physiotherapy in the convenience of your home

Cambridge Villages Physiotherapy provides a friendly, supportive and knowledgeable physiotherapy service. Travelling to you at your own home or work in Comberton and surrounding villages.

- Over 10 years of Musculoskeletal Physiotherapy Experience in the NHS
- BSc in Physiotherapy, and MSc in Manual Therapy (Musculoskeletal Physiotherapy)
- HCPC registered member of CSP (Chartered Society of Physiotherapy) and MACP (Musculoskeletal Association of Chartered Physiotherapists)

Phone: 07356038034

Email: naomi@cambridgevillagephysiotherapy.co.uk

Website: cambridgevillagephysiotherapy.co.uk

BIN COLLECTIONS FOR NOVEMBER

Black Bin: 13th, 27th

Blue Bin: 6th, 20th

Green Bin: 6th, 20th

NOTICE TO ADVERTISERS

Advertisements are published quarterly. Copy for inclusion in the next available edition of the Calendar must reach us by 17th January at the very latest. Advertisements will NOT be published unless full payment has been received in advance. Please note: Quarter-page adverts MUST be Portrait-style, half-page adverts MUST be Landscape style. In the first instance, advertisers should contact Jean Verney at: calendaradstoft@gmail.com to discuss their requirements.

USEFUL PHONE NUMBERS

Alcoholics Anonymous: 0845 769 7555
Anglian Water (for sewage): 08457 145 145
(Emergency number for burst water pipes: 01223 706050)
Ashcroft Veterinary Surgery: 01954 210250
Bourn GPs' Surgery: 01954 719313
Cambridge AIDS help-line: (01223) 508805
Cambs County Council: 0345 045 5200
Cambridge Dial a Ride 01223 506335
Cambridge Water: 01223 706050
Care Network Cambridgeshire 01954 211919.
Citizens Advice Bureau: 0844 848 7979
Comberton GPs' Surgery: 01223 262500
Comberton Village College: 01223 262503
Community Warden (Age UK CAP) 07812 495997
County Councillor Michael Atkins 07968 264637
CVC Community Education: 01223 264721
District Councillor: Lina Nieto 07506 420655
Household Waste/Pest Control: 0345 045 0063
Lifespan Health Care, Family and Child Team: 01223 264460
MP pippa.heydings.mp@parliament.uk
Meridian Primary School: 01223 262423
Police: 101 (Emergencies: 999)
(Local Beat Officer is PCSO Sam Kennedy)
Road/Pothole Reporting: 0345 045 5212
Street Lighting: 0800 7838 247
Street Cleaning: 03450 450 063
South Cambs District Council: 01954 713 000
South Cambs Fire and Rescue: 01480 444 500
Toft Car Scheme: 07790 171710
Trading Standards: 0345 0455206
UK Power Networks (Emergencies): 0800 31 63 105

SOME USEFUL WEBSITE ADDRESSES

Cambridgeshire Constabulary:
<https://www.cambs.police.uk/contact/af/contact-us->
Cambridge City Food Bank:
<https://cambridgecity.foodbank.org.uk/>
South Cambridgeshire District Council:
<http://www.scambs.gov.uk>
Toft Parish Council: <https://tpc.toft.org.uk>
Toft Shop: <http://www.toftshop.co.uk>
Toft Village Website: <http://www.toft.org.uk>

A call for contributions

We hope you're enjoying the Toft Village Calendar and all the usual content. One of recent new features we have included is 'What I'm Reading': let people know in just a few sentences (doesn't have to be more than 50 -100 words) what you're reading and why you're enjoying it – or disliking it. And if you'd like to write a guest editorial, we'll consider contributions of 300 - 500 words on any topic. Naturally, we reserve the right to not publish any offensive, politically-biased or inappropriate material; otherwise, feel free to offer a view of the world that would interest Calendar readers. And if you have any other ideas for the Calendar, let us know. Send all contributions and ideas to calendareditor@toft.org.uk.

CONTRIBUTIONS TO THE CALENDAR

The Calendar is always pleased to receive contributions from readers, advertisers and fund raisers. We reserve the right to edit, amend, abridge or otherwise butcher any submissions to accord with technical or editorial requirements, or sometimes just on a whim. We do not normally accept anonymous contributions or those using pen names.

Contributors are asked to note that all text formatting is removed from items on receipt. Please send your written contributions as Word documents, if possible, or just plain text.

Please avoid sending PDFs unless you have no other option. Graphics, photos and illustrations should be sent separate from the text if possible. Please ALWAYS send your contributions to calendareditor@toft.org.uk - never to an individual member of the editorial and design team.

And, finally...Please remember that contributions for the next issue of the Calendar must reach the Editor by 18th November.

Many thanks to all who contributed to this edition.
Email: calendareditor@toft.org.uk
Post: The Gig House, The Old Horse Yard,
Comberton Road, Toft CB23 2RY