

# TOFT VILLAGE CALENDAR

January 2026



## DIARY DATES

### The Parish Council

The next meeting will be on Monday 5th January 2026 at 7.00pm in Toft People's Hall. All welcome.

### Toft

### Friendship Club

Wednesday  
9th January  
Post-Christmas lunch for Members and invited guests

### The Warm Hub

every Monday at Toft People's Hall from 10-12

### Toft Club

Murder Mystery  
Saturday 31st in Toft People's Hall



## EDITORIAL

The festive season is behind us and a new year beckons. A time for looking back and considering how we could do things better next time around. Invariably a futile exercise of course but, riding the wave of good cheer generated over Christmas, I nevertheless decide to generate a few resolutions for 2026. But then the phone pings to reveal a series of messages from various parcel delivery firms and a precious moment of contemplation and good intentions vanishes in a red mist.

I use these courier services as much as the next person given that they link up with online shopping outlets that I can explore from home and they deliver the resulting purchases to my door (or at least something approximating) almost at the drop of a hat. It is undeniably reassuring to get a message saying that the purchase will arrive at a particular time and date but the endless stream of messages, by email, text, or both, from multiple couriers quickly becomes wearing. There is no escape from 'Your item has been dispatched.' 'We have your parcel.' 'Your parcel has arrived at our local depot.' 'Your parcel is out for delivery'.

Some firms even invite you to track your delivery online which, in my experience, often has one inwardly shouting at the screen: why has the driver stopped for 20 minutes two stops up from my house?! The courier is close so I will now be awaiting the doorbell or the door knocker. Time goes by and, the ultimate indignity, a message arrives, 'Your parcel has been delivered'. Why couldn't you knock on the door or ring the bell like the old posties would do? A further indignity at times: why is the item not then at my door or at my various 'safe locations' and instead left under my parked car or thrown over the back gate? To be fair, these are vanishingly rare events but are a final straw.

Unsurprisingly, I am soon in receipt of a follow-up message along the lines of 'How did we do?' or 'Rate your delivery'. Perhaps the rationale is that the company that communicates with maximum officiousness is the one you will choose again – even though you didn't choose it in the first place as it was anonymously allocated to you by some piece of software.

New Year's resolution: off to real shops for the January sales and refuse to get wound up when the parking app in town doesn't work for lack of signal!

## Toft 2025

In 2020 we started an initiative called Toft 2020, where we gathered lots of information and news items about Toft during that year. As it happens, it was the Covid year and so it was quiet but still interesting. It was always the intention to repeat the exercise every five years and so we have been gathering a lot of news from this year, which you can see on our web page at <https://2025.toft.org.uk/>. Lots has been covered during the year but this is a final call for contributions. So, if you are involved in any clubs or societies in Toft and can write a review or report, if you have any particular knowledge etc. about Toft during the year, please send it to me and I'll add it to the site for you. My email address is [martin.yeadon@gmail.com](mailto:martin.yeadon@gmail.com). Thank you in anticipation.

## THE CHURCH IN TOFT

**St Andrew's Parish Church** This church extends a warm ecumenical welcome to all.

**Assistant Curate** Revd Barnabas Leeke 07787 800 888  
**Lay Minister** Mrs Barbara Preece 263466  
**Churchwardens** Mrs Ann Mitchell 262516  
Mrs Elizabeth Dolman 262574  
**Deputy Wardens** John Quenby 263949  
Jean Verney 263557

## SERVICES OF WORSHIP

### 4th January

8.30am Holy Communion (BCP)  
Revd Prof. Michael Reiss

11.00am Covenant Service  
Revd Robert Dolman

### 11th January

11.00am Holy Communion  
Revd Barnabas Leeke

### 18th January

8.30am Holy Communion (BCP)  
Revd Prof. Michael Reiss

11.00am Morning Worship  
Mrs Cathy Michell

### 25th January

11.00am Holy Communion  
Revd Barnabas Leeke

**Wednesday morning prayer** 9.30am at St. Andrew's.  
These may need to be cancelled – please check with Churchwardens.

Also on Wednesday evenings at 8.00pm, via Zoom a service of compline: ID: 899 215 191 or follow the link: <https://us02web.zoom.us/j/899215191>

Zoom services available at 11.00am on Sundays.  
MEETING ID: 823 1147 36

# THE PASSAGE OF TIME

There are many different perspectives on the passage of time. Different religious allegiances, cultural interests, occupations, backgrounds and circumstances will give varied rhythms to the year. They will allocate new beginnings and new endings within the passage of 365 days that it takes the earth to orbit the sun. For teachers and students it is the academic year reaching its climax in tests and examinations. For farmers the agricultural year may end when 'all is safely gathered in' and begin with new sowing. For sportspeople the year may reach its climax with a Cup Final or the end of a competitive league. For some the ending of the fiscal year in April will be a key moment. People from different cultures may celebrate the start of, say, the Chinese New Year. The Christian Church begins its New Year on Advent Sunday. For Methodists an administrative New Year begins on the first Sunday in September, the day on which ministers take up fresh appointments and begin a new chapter in their ministries. It is possible of course in a busy life to be involved in more than one of those ways of life and thinking of time.

January 1 is an arbitrary social construct and the New Year has begun at different times even in the UK but it is one that now unites us all. It gives us a chance to wipe our tarnished slates clean and to reset our compass by making new resolutions, restoring fractured relationships and employing our time more productively. For many years Methodist churches have marked the coming of a New Year with what is called a Covenant Service, whose theme is the renewal of our relationship with God, with each other and with the society and world we inhabit. But all of us together can take seriously the fact that time is a gift which does not last for ever and that we should try to use well.

HAPPY NEW YEAR

*Robert Dolman*





# THE CHURCH IN TOFT



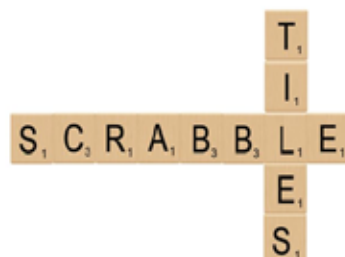
*The WARM HUB is meeting every Monday*

from 10.00 to 12.00 at Toft People's Hall.



Come and join us for chat, games, friendship  
and refreshment, all for free.

We would love to see you there -  
you'll be guaranteed a warm welcome.  
Feel free to bring a friend.



## A BIG THANK YOU

- From The Women's Refuge for all the presents that were produced for the Gift Service and from Stratagem IPM based in Meridian Court. It was, once again, an amazing collection, including nearly £100 and they are very grateful.
- To Toft Choir and Toft Session for another outstanding concert, raising much needed funds for the restoration fund.
- To all those who with creativity and variety produced a Christmas tree for our festival weekend; in all, over 100 people visited or came to the service

## Toft Christmas Greetings make £440

A Huge THANK YOU from St Andrew's to all those who sent their Christmas greetings via the Village Calendar.

## Friendship CLUB

- 9th January at 2.30pm in Toft People's Hall
- Post-Christmas lunch – for Members and invited guests



## COMBERTON HERITAGE SOCIETY

A talk by Susan Oosthuizen, Tuesday  
27th January

## The Anglo-Saxon Fenland

Archaeologies and histories of the fens continue to suggest that the early medieval fenland was dominated by the activities of north-west European colonists in a largely empty landscape. Using existing and new evidence and arguments, Prof. Oosthuizen offers another interpretation.

Susan Oosthuizen is Emeritus Professor of Medieval Archaeology at the University of Cambridge. She specialises in examining the origins and development of early medieval and medieval landscapes and in the evolution of systems of governance.

The meeting will be at 8pm in Comberton Village Hall.

**All visitors most welcome.**



# TOFT PARISH COUNCIL

## Who is on the Council?

The Parish Council is comprised of a Chair and Deputy chair and five other councillors, all of whom are volunteers. Currently these members are:

	Phone	E-mail
<b>Chair:</b>		
Martin Yeadon	263663	<a href="mailto:cllr.yeadon@tpc.toft.org.uk">cllr.yeadon@tpc.toft.org.uk</a>
<b>Deputy:</b>		
Elaine Miles	262255	<a href="mailto:cllr.miles@tpc.toft.org.uk">cllr.miles@tpc.toft.org.uk</a>
Avril Coghlan		<a href="mailto:cllr.coghlan@tpc.toft.org.uk">cllr.coghlan@tpc.toft.org.uk</a>
Emma Darbyshire	07763 463234	<a href="mailto:cllr.darbyshire@tpc.toft.org.uk">cllr.darbyshire@tpc.toft.org.uk</a>
Rebecca Harris	07796 176333	<a href="mailto:cllr.harris@tpc.toft.org.uk">cllr.harris@tpc.toft.org.uk</a>
Giles Harrison		<a href="mailto:cllr.harrison@tpc.toft.org.uk">cllr.harrison@tpc.toft.org.uk</a>
Sarah Tebbit		<a href="mailto:cllr.tebbit@tpc.toft.org.uk">cllr.tebbit@tpc.toft.org.uk</a>

### Clerk:

Ben Stoehr 01954 210241 [clerk@tpc.toft.org.uk](mailto:clerk@tpc.toft.org.uk)

The Parish Council represents the residents of Toft and aims to support the welfare and interests of its residents and businesses. Each council member takes responsibilities for specific areas covering Highways, Health and Safety, Footpaths, Lot Meadow, The Recreation and Playground area, The Allotments, Climate Change, The People's Hall, the Defibrillator, and Welcome Packs.

---

*(This summary can be found on the Parish Council website: <https://tpc.toft.org.uk>)*

Next Meeting: The next meeting will be Monday 5th January 2026 at 7.00pm in Toft People's Hall.

All welcome.

The Council met on Monday 1st December 2025 in the People's Hall.

Apologies were received from Cllrs Darbyshire, Harris, Harrison and Coghlan.

The minutes of the previous meeting were approved.

A local landowner attended the meeting to discuss the moving of a barn on their land due to EWR's plans for the railway, which will go through their land. While they do not intend to move the barn in the immediate future, they wish to request planning permission from SCDC to move it sometime in the future. The landowner agreed to consider the proposed wording for the sign to be placed in Home Meadow requesting dog owners to keep dogs under control. They also raised the possibility of making the field close to the business units at the top of Church Road into a designated dog walking area, which people could rent by the hour/half-hour as has been done in other villages. The Chair pointed out that this may not prove successful given there are so many fields nearby

with footpaths going through them. The PC was supportive of the barn move although it would need to consider it once a planning application had been made.

It was reported that there had been no response from the County Councillor regarding the overgrown cycleway.

Cllr Tebbit reported that an article is to be placed in the Calendar in January 2026 seeking residents' opinions on the proposal for the Finding Fitness climbing frame to be erected in the children's play area.

Regarding the youths on motorcycles, while we are still awaiting a response from Comberton Parish Council, it was noted that now the winter months have begun, the incidences of speeding seem to have diminished.

We are still awaiting the figure proposed for the purchase of the Methodist Chapel and the next steps will be considered when this is received.

No volunteers have come forward for carrying out winter gritting.

It was agreed that due to the new regulations, the Parish Council would need to have full control of its website and email system and the Clerk would be providing quotations of website providers for discussion at the next meeting.

The quotes for additional street lighting will be discussed at the next meeting.

The finance report was considered and the payment of bills approved.

Cllr Miles reported the only matter of a health and safety issue regarding the Chinese restaurant, which has now been vacated, but whose wheelie bins haven't been emptied. Cllr Miles is to report this to the Environmental Agency.

Following discussion of the budget, the Parish Council is happy to report that the Toft residents' contribution to the precept for FY2027 will remain the same.

Cllr Miles reported that there is still a lot of concern being expressed by residents about the speed at which the school buses going to and from Comberton College travel through the village. It was agreed the PC would again write to the college if it did not improve.

It was reported by Cllr Tebbit that TPH is to consult on new improvements, which will initially be re-painting the hall, some new furniture and moving the position of the bar so that it is more accessible.

The choice of the Village Hero award was very difficult as all the nominees were considered worthy and made valuable contributions to the village. However, we are pleased to announce that it was decided that the award would be given to both Peter Johnson and Brian Roberts and this would be announced at the Social Club Christmas Dinner. *(This summary can be found on the Parish Council website: <https://tpc.toft.org.uk>)*

# Anatomy of a People's Hall

## 1835-1959: Schoolhouse

For 124 years, Toft People's Hall was the village school. Next time you are in there, have a look at some of the old school photos. A number of living Toft residents went to school there.

## Post WW2: Evolution from school to People's Hall

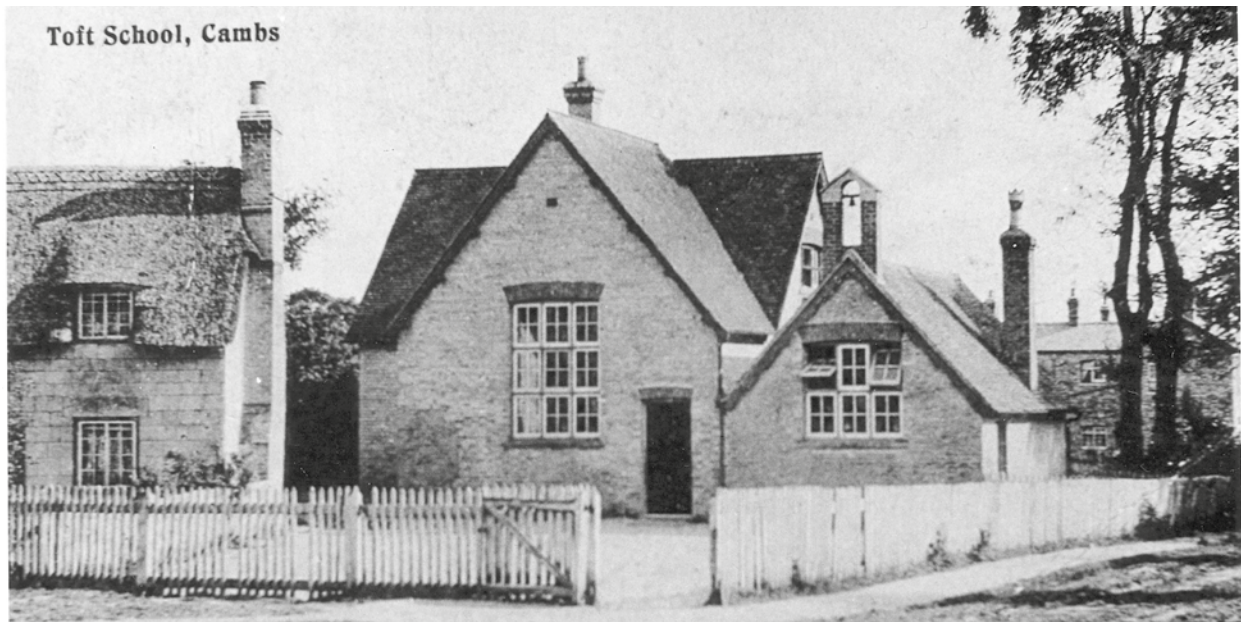
In April 1945, there was a meeting to start a fund to get our own hall, as the Church Institute (in School Lane) did not allow activities such as mixed dancing. Jack Jakins, the Toft Cycle Works proprietor, was the Treasurer, helped by Toby Morling, an ardent admirer of the Soviet Union. The school finally closed in 1959. In 1961, the cash book was produced and inscribed across the front was 'Toft People's Hall'. Jack Jakins told a meeting that the cash had been raised for the People's Hall and he would only hand it over for that purpose.



Jack Jakins (in Home Guard uniform)

## 1965: Grand Opening

In 1964, Toft Parish Council purchased the building from the Diocese of Ely for £750 and the People's Hall was opened by Jack Jakins on Saturday 3rd April, 1965.



Toby Morling

The whole of the subsequent week was devoted to the opening, with a 'Grand Social' held on April 3rd, Bingo on Wednesday 7th and a children's painting competition on Thursday 8th, with a prize-giving ceremony for the competition and a 'social afternoon for mothers and children'.

The only other village with a 'People's Hall' is, as far as we know, Sedbergh, Cumbria.

Finally, next time you are in the hall, take a look at the plans (displayed on the wall) to revamp the bar area to make it more welcoming.



# Toft Christmas 2025

Toft always starts Christmas off in great style and 2025 was no exception, with the Christmas Fayre, the Christmas Tree Festival and the Christingle Service all creating the perfect Yuletide atmosphere. Christmas 2025 also saw a lovely new nativity scene, with the stable made by Peter Barker and the figures (made of felt) by Katherine James.









# Toft Club News

A Happy New Year from everyone at The Club. We hope you had a good Christmas break and we wish you a happy 2026. We have a full program of events, food and gigs planned for 2026 – there'll be more on this next month and on the website / social media.

The amazing **Murder Mystery Evening** returns on January 31st. Join us for one of Carol's excellent meals and use your detective skills to solve the diabolical murder that has taken place! Numbers are limited so be sure to get your tickets early – on sale now at the Club.

The **January film** will be on Saturday 24th, when we will be showing the 2025 release *Black Bag*. Starring Michael Fassbender and Cate Blanchett, it tells the



story of intelligence agent Kathryn Woodhouse, who is suspected of betraying the nation, and her husband – also a legendary agent – who faces the ultimate test of whether to be loyal to his marriage or his country. Doors open at 7:30pm and the film starts promptly at 8pm. Film Club membership is £12 for the year (due in January for most members) or evening membership is £3.00.

Most of our regular events are taking place in January, **Toft Art** is taking a break but returns in February, **Carpet Bowls** on Friday 9th, **Toft Quiz** on Thursday 15th, **Toft Bingo** on the 22nd and **Table Tennis** on Thursday 29th. Our popular monthly **Open Mic / Music Night** is on Saturday 10th.

The Club is always open every Thursday and Friday evening from 8pm, plus most Saturday evenings and there is always a warm welcome where you can meet up with friends and enjoy a drink.

## Keep up to date here:

Website: <https://toft.club>

Follow us on Facebook: <https://www.facebook.com/ToftSocial>

# The SCHOOLROOM Community Café



It was lovely to see so many people at our special **Christmas Café session on December 17th**. Santa made a visit, we sang carols and lots of mince pies and mulled wine were consumed.

The Café reopens on Wednesday January 7th, at the usual time of 10.30am to 1.30pm. 'Funtime for Little Ones' resumes its half-hour of songs and rhymes from 10.30am, with plenty of time for mums and dads (or grandparents) to chat afterwards over a coffee and cake. This session is free and there's no need to book - just turn up.

Regular customers will notice that we have had to raise our prices a little (for the first time since the Café started!) but they still represent excellent value and we're keeping the 'loyalty card' giving one free drink for every four purchased. If you haven't already got one, do ask.

We always welcome new people to join our teams of volunteers, whether setting out furniture, serving food and drinks, washing up or baking cakes and making soup. It's a good way to get to know more people. To find out more, email [info@cafe.toft.org.uk](mailto:info@cafe.toft.org.uk).



# Village Heroes

A few years ago, the District Council held an annual event to celebrate 'Village Heroes' across the district and Toft was very successful in achieving recognition for several of our residents. Recently the Parish Council agreed to start our own Village Hero award scheme in order to recognise the enormous amount of voluntary work that certain individuals put into making Toft such a great place to live.

The PC called for nominations during November and received several very worthy nominations, which the PC whittled down to two, carrying the other nominations across to future years.



The two winners of a Toft Village Hero Award for 2025 are Brian Roberts (right) and Peter Johnson.

Brian was instrumental in creating the recreation ground and play area, including regularly mowing the area. He ran the firework displays for around 30 years, initially to fund the play area and then he continued to be involved. He was fully involved in setting up and running the Village Sports Day and very involved in Comberton Swimming Club. Brian was a key player in setting up the Social Club and still helps with its running, sitting on the committee and other activities. He continues to control the heating in the People's Hall.

He made the beacon, the seat around the tree on the village green and many of the props for the various shows we've had in the village. He is the go-to person if electrics or lighting is needed for any event. Famously he made the bar for the Social Club.

Peter has been a great supporter of the Church in Toft and has been awarded the Etheldreda Award by the Diocese of Ely for his support. It is rare for this award to be given to an individual who doesn't hold an official position in the church, which reflects the high esteem in which he is held. He cared for the graveyard for many years and is still very involved including managing the heating system in the church.

He spent some time as Chair of the People's Hall Committee, when the hall was being extended. He collects and distributes wood to those less able to do so and also supplies wood for any beacon lighting. He is active in the village voluntary driver scheme and collects prescriptions for the shop.

And, of course, he is famous for his cakes and jams that have helped fund various charitable causes over the years. As somebody said, 'If you need help, Peter is the first one to volunteer.'

This is also a good opportunity to thank the many people who work to make Toft such a great place. The list of voluntary efforts is too long to completely capture but if you help at the café, give hymn books out at the church, help clear Lot Meadow, serve behind the bar, organise the Friendship Club or Knit and Natter or a social club event, help produce the Calendar or just keep an eye on a neighbour or make any other voluntary contribution, THANK YOU on behalf of the Toft Community.



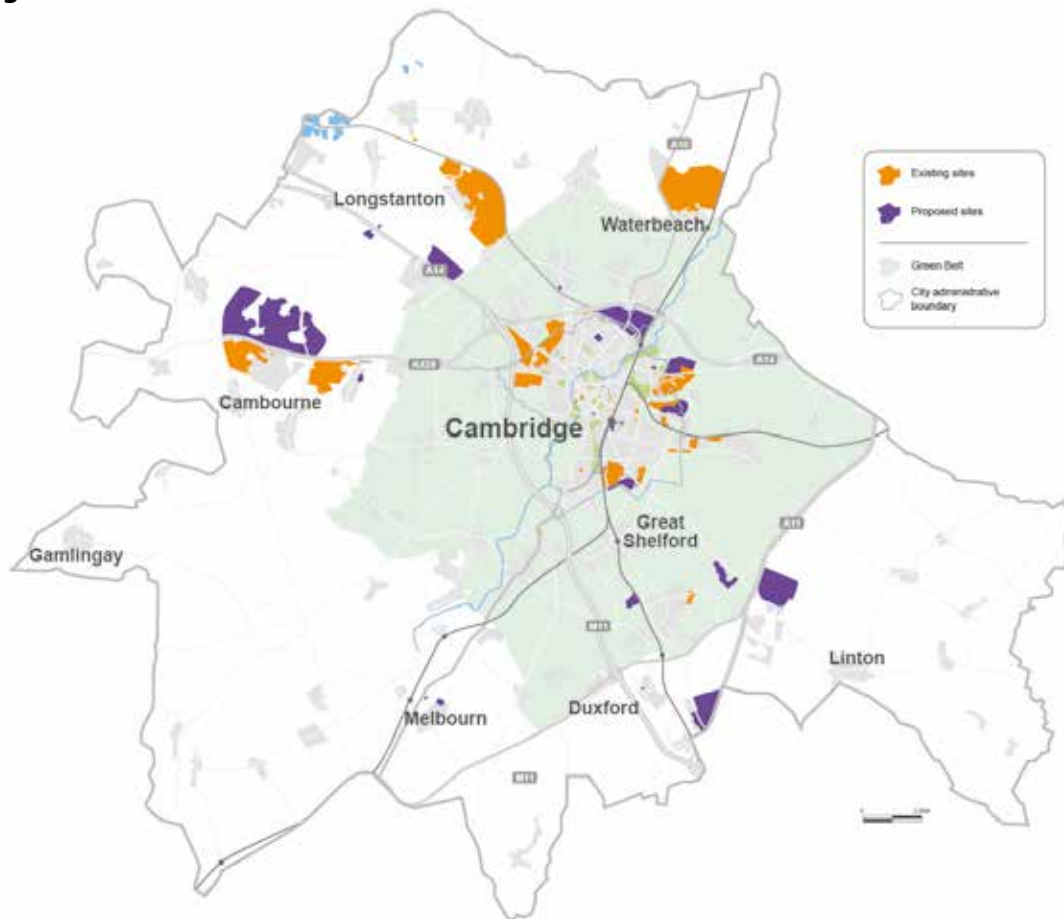
# Have Your Say on the Future of Greater Cambridge

*By James Littlewood, CEO of Cambridge Past, Present & Future*

Cambridge City Council and South Cambridgeshire District Council are working together to shape how our area develops over the next 20 years and beyond. Their plans are set out in the Greater Cambridge Local Plan 2025-2045. It has just been released in draft form, with a public consultation underway until 30 January 2026.

The plan is for around 50,000 new housing units and 73,000 new jobs. This would be the equivalent of building another Cambridge in 20 years. The vision is ambitious: to reduce climate and environmental impacts while enabling a thriving local economy and improving quality of life for residents – all whilst doubling the population! Is that realistic or achievable? The plan will affect everyone who lives, works or visits greater Cambridge so it's important that you have your say.

## 1. What is going to be built and where?



Building will continue at places that are already planned and being built, including northwest Cambridge and the new settlements at Northstowe and Waterbeach. Sites proposed in previous plans are still included, such as Cambridge Airport (known as Cambridge East) and North East Cambridge (Science Park and Cowley Road). The latest plan also identifies new locations such as Cambourne North (13,000 homes and employment space) and Grange Farm, near Little Abington (6,000 homes and employment). In the rural area surrounding the City, there are development sites at locations including Melbourn, Caldecote and Fulbourn.

## 2. What is not going to be built?

This is more important than you might imagine. Over 900 proposals for development were received by the councils, covering most of the land around Cambridge. Only a small number have been chosen. Those that have not will surely be directing their agents and legal teams to argue for inclusion. Details of all the sites which landowners have put forward can be found at <https://www.greatercambridgeplanning.org/local-and-neighbourhood-planning/emerging-plans-and-guidance/call-for-sites>.



### 3. How are things going to be built?

A Local Plan is full of policies - this is the detail - and it matters. The policies set the rules for developers – what they can and can't do. The policies apply to all developments not just those identified in the Local Plan. For example, once the Local Plan is approved, a new development might be proposed which wasn't originally included. That new development would then be assessed against the policies in the Local Plan.

### 4. What is the evidence that these developments and policies are needed?

To inform and justify their decisions and policies the councils have commissioned research reports on various topics. It stands to reason that if the evidence is wrong, then the decisions may also be wrong. As an example, the previous Local Plan was based on evidence that there would be enough water for the scale of development envisaged. That was true, but the evidence did not say that there would not be enough left for our chalk streams and their wildlife – and we now have a water crisis as a result.

### How to have your say

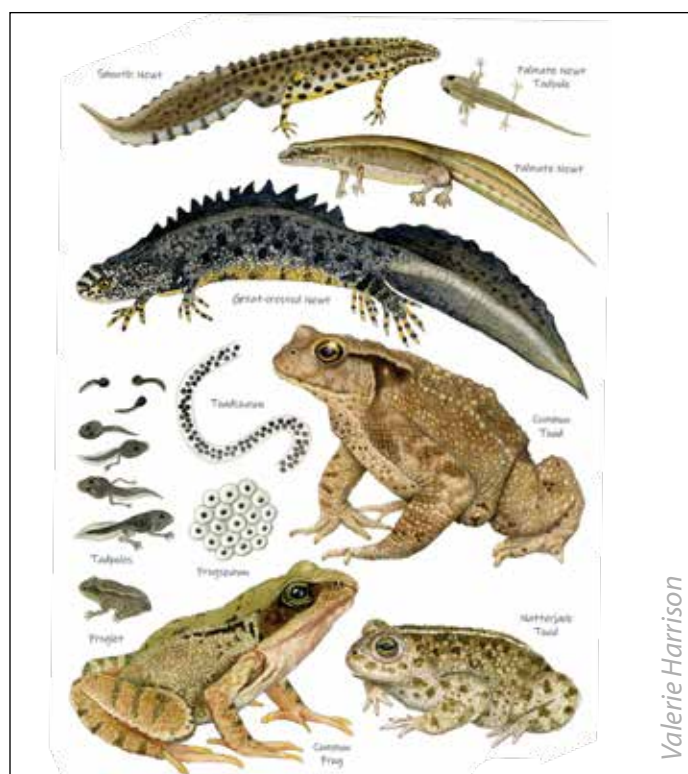
Go to <https://greatercambridgeplanning.org/local-plan> to view the documents and respond to the consultation. The councils will also be getting out and about to hear views. There will be a series of drop-in sessions and they will be going to Christmas markets, schools and community groups. Details of these are also on the consultation website. Remember that the deadline for the consultation period is January 30, 2026.



### Update for January 2026

One of our local projects is Papworth Everard Toad Patrol. In spring 2025, we trained nine new volunteers, who rescued over 2,500 amphibians crossing roads on their migration to and from their breeding pond. They were mostly toads, but frogs and newts use the same pond.

Amphibians are mostly dormant through the colder months but can wake up on warmer days and head to their breeding pond in late February or early March. Some male frogs spend the winter at the bottom of ponds. Amphibian skin is very sensitive, so please only pick up animals that are in immediate danger, and if possible, wet your hands or use gloves. Please get in touch if you know of a stretch of road where amphibians are run over in large numbers.



If you do, or want to do, something to benefit local wildlife or encourage sustainability, please get in touch.

### Local enquiries

[Rebecca.Neal@wildlifebcn.org](mailto:Rebecca.Neal@wildlifebcn.org)

Facebook: @BeccaBadgerWTBCN

[TrumpingtonMeadows@wildlifebcn.org](mailto:TrumpingtonMeadows@wildlifebcn.org)

Facebook: @TrumpingtonMeadowsNatureReserve

### General enquiries

[cambridgeshire@wildlifebcn.org](mailto:cambridgeshire@wildlifebcn.org)

@wildlifebcn

[www.wildlifebcn.org](http://www.wildlifebcn.org)

## BIN COLLECTIONS FOR JANUARY

Black Bin: 8th, 22nd  
Blue Bin: 2nd, 15th, 29th  
Green Bin: 15th

## NOTICE TO ADVERTISERS

Advertisements are published quarterly. Copy for inclusion in the next available edition of the Calendar must reach us by 17th January at the very latest. Advertisements will NOT be published unless full payment has been received in advance. Please note: Quarter-page adverts MUST be Portrait-style, half-page adverts MUST be Landscape style. In the first instance, advertisers should contact Jean Verney at: [calendaradstoft@gmail.com](mailto:calendaradstoft@gmail.com) to discuss their requirements.

## USEFUL PHONE NUMBERS

Alcoholics Anonymous: 0845 769 7555  
Anglian Water (for sewage): 08457 145 145  
(Emergency number for burst water pipes: 01223 706050)  
Ashcroft Veterinary Surgery: 01954 210250  
Bourn GPs' Surgery: 01954 719313  
Cambridge AIDS help-line: (01223) 508805  
Cambs County Council: 0345 045 5200  
Cambridge Dial a Ride 01223 506335  
Cambridge Water: 01223 706050  
Care Network Cambridgeshire 01954 211919.  
Citizens Advice Bureau: 0844 848 7979  
Comberton GPs' Surgery: 01223 262500  
Comberton Village College: 01223 262503  
Community Warden (Age UK CAP) 07812 495997  
County Councillor Michael Atkins 07968 264637  
CVC Community Education: 01223 264721  
District Councillor: Lina Nieto 07506 420655  
Household Waste/Pest Control: 0345 045 0063  
Lifespan Health Care, Family and Child Team: 01223 264460  
MP [pippa.heydings.mp@parliament.uk](mailto:pippa.heydings.mp@parliament.uk)  
Meridian Primary School: 01223 262423  
Police: 101 (Emergencies: 999)  
(Local Beat Officer is PCSO Sam Kennedy)  
Road/Pothole Reporting: 0345 045 5212  
Street Lighting: 0800 7838 247  
Street Cleaning: 03450 450 063  
South Cambs District Council: 01954 713 000  
South Cambs Fire and Rescue: 01480 444 500  
Toft Car Scheme: 07790 171710  
Trading Standards: 0345 0455206  
UK Power Networks (Emergencies): 0800 31 63 105

## SOME USEFUL WEBSITE ADDRESSES

Cambridgeshire Constabulary:  
<https://www.cambs.police.uk/contact/af/contact-us->  
Cambridge City Food Bank:  
<https://cambridgecity.foodbank.org.uk/>  
South Cambridgeshire District Council:  
<http://www.scambs.gov.uk>  
Toft Parish Council: <https://tpc.toft.org.uk>  
Toft Shop: <http://www.toftshop.co.uk>  
Toft Village Website: <http://www.toft.org.uk>

## A call for contributions

We hope you're enjoying the Toft Village Calendar and all the usual content. One of recent new features we have included is 'What I'm Reading': let people know in just a few sentences (doesn't have to be more than 50-100 words) what you're reading and why you're enjoying it – or disliking it. And if you'd like to write a guest editorial, we'll consider contributions of 300-500 words on any topic. Naturally, we reserve the right to not publish any offensive, politically-biased or inappropriate material; otherwise, feel free to offer a view of the world that would interest Calendar readers. And if you have any other ideas for the Calendar, let us know. Send all contributions and ideas to [calendareditor@toft.org.uk](mailto:calendareditor@toft.org.uk).

## CONTRIBUTIONS TO THE CALENDAR

The Calendar is always pleased to receive contributions from readers, advertisers and fund raisers. We reserve the right to edit, amend, abridge or otherwise butcher any submissions to accord with technical or editorial requirements, or sometimes just on a whim. We do not normally accept anonymous contributions or those using pen names.

Contributors are asked to note that all text formatting is removed from items on receipt. Please send your written contributions as Word documents, if possible, or just plain text.

Please avoid sending PDFs unless you have no other option. Graphics (if essential) are best submitted as PNG or JPEG files.

Please ALWAYS send your contributions to [calendareditor@toft.org.uk](mailto:calendareditor@toft.org.uk) - never to an individual member of the editorial and design team.

Many thanks.

And, finally...Please remember that contributions for the next issue of the Calendar must reach the Editor by 18th January.

Many thanks to all who contributed to this edition.

Email: [calendareditor@toft.org.uk](mailto:calendareditor@toft.org.uk)

Post: The Gig House, The Old Horse Yard, Comberton Road, Toft CB23 2RY