



Toft Village Calendar

Produced and Distributed by St. Andrew's Parish Church

May 2024



EDITORIAL

I've been reading recently about the legal kerfuffle involving the Michaela School and some of their litigious students. A shame that wrangles like this get as far as the courts, but I guess when a rock picks a fight with a hard place, it's going to happen. They're all in deepest London, too, so... y'know. But it brought home to me just how much schools have changed and my mind wandered back to the dear old Alma Mater and, in particular, to our French lessons.



DIARY DATES

TOFT FRIENDSHIP CLUB

[Over 50s Club]. 8th May 2.30 Toft People's Hall. A talk on the American Cemetery by Suzie Harrison, their interpretative guide. Guests always welcome

The Parish Council

: The Parish Council Annual meeting will take place in The People's Hall on Monday 13th May 2024 and will be preceded at 7.00pm by the William Eversden Charity Meeting (Allotments Charity). All Welcome.

Sewing, Knit and Natter

Our next meeting will be Wednesday May 22nd (NOT 29th) in the Methodist Chapel, 10.30 -12.30. New members welcome.

For further information please contact Lucy (262948) or Sally (262895).

The chap who'd drawn the short straw and had the job of administering our tuition was a clubbable old sort modelled loosely on Wilfred Hyde-White and one of the few - and the last - people I've ever met who took snuff. People said he'd had a good war. Whether he had or not, he'd certainly used his time in France to develop a taste for brandy, evidenced by the hip flask which formed a noticeable and permanent bulge in his jacket pocket. In fact, an early afternoon French lesson would invariably start late, as another member of staff had to be sent to the second nearest pub to drag him out (He was cunning - the nearest pub might easily contain some of our sixth-form, earnestly trying to pass themselves off as honest working men by dint of removing their school ties).

In the Summer term, French lessons took the gloriously inspired form of a trot over to the school cricket pitch where we were divided into two teams plus hangers-on. Then - being years ahead of our time - we played a quick game of limited-overs cricket. The catch was that the whole match had to be conducted both in French and strictly in accordance with the laws of the game. So, captains were not allowed to place the field by merely telling players to 'go over there' or 'back a bit'. Instead we had to come up with rococo circumlocutions such as: "*Smith, vous allez à la couverture supplémentaire profonde et vous, Jones, à l'idiot à mi-chemin.*" Fielders blundering off to the wrong positions were deemed to have failed the on-field comprehension test and recalled for a second go. If you didn't know the correct phraseology for some command or exhortation, you were sent off to find out what it was, write it down (twice!) and submit it to the furtively-topping *bon vivant* acting as umpire. To remind bowlers of the virtues of 'line and length', the bails were removed from the stumps and replaced with a six-inch ruler. On this perched a couple of sixpences, a reward for any bowler lucky enough to knock them off. Mostly, they were safe enough.

I suppose this 'learn-by-osmosis' approach must have worked, to some extent and without the need for any conscious effort on our part, too - an added bonus. Most of us stumbled through French O-level, if nothing more onerous. But I wonder what they'd make of it down at the Michaela? I'd love to see a court try and pick the bones out of that. And, if they ever do, it's not too late to award me a ridiculous amount of compensation.

Do you have any spare time on a regular or adhoc basis? **Toft car scheme** is seeking some new drivers. The scheme is set up to help folks in the village to get to doctors, dentists, hospital and medical appointments. Travelling by bus to many of the appointments is not practical, and a taxi is often very pricey.

The scheme works in a simple way, a client will contact the co-ordinator with details of their appointment (that's me, **Naomi Wrycroft**), who will contact a driver from the list, arrange the pick-up time and ring the client back to confirm details. The price of the journey is paid in cash to the driver (30p a mile) and the additional 15p per mile is invoiced to Cambridgeshire council once a quarter.

If you are interested in helping your fellow villagers, your commitment does not have to be regular, perhaps during the school holidays? You always have the option to decline a lift when you are contacted.

Please contact me on 07790171710 or wrycrofts@gmail.com for more information.

MINISTRY TEAM**THE CHURCH IN TOFT**

St. Andrew's Parish Church

Assistant Curate: Revd Barnabas Leeke
07787 800 888Lay Minister: Barbara Preece Tel:
263466

Churchwardens:

Ann Mitchell 262516

John Quenby 263949

Methodist ChurchMinister: Revd Charity Nzegwu
01763 241803

Stewards:

Diana Tebbit 01223 263557

Stephen Acklam 264055

Mrs Pat Morton 264010

SERVICES OF WORSHIP*5th May* 8.30am Holy Communion
(BCP) - Rev Prof. Michael Reiss
SPRING FEAST SERVICES see
announcement below*9th May* 7.00pm ASCENSION –
Lordsbridge Holy Communion at Barton*12th May* 11.00 am Holy Communion,
St. Andrew's – Rev. Clare Coates*19th May* 8.30am Holy Communion
(BCP) – Rev Prof. Michael Reiss
11.00am Morning Worship, Methodist
Church – Rev Barnabas Leeke*26th May* 11.00am Morning Prayer – St.
Andrew's - Rev Robert DolmanThere will be morning prayer at St.
Andrew's every Wednesday at 9.15 am
(about half-an-hour)Also on Wednesday evenings at
8.00pm, via zoom a service of compline:
ID: 899 215 191 or follow the link:
<https://us02web.zoom.us/j/899215191>Zoom services available at 11.00am
MEETING ID: 823 1147 3640

An accusation I occasionally hear against the Christian church is that its festivals are 'merely' replacements for older pagan festivals occurring at the same time. Well, this May we have the joy of mixing everything up in Toft as we celebrate the arrival of spring in ways which are secular, Christian and even encompass a more 'natural theology'. I do hope to see many of you at the events being planned for the May Day weekend!

The early church did align many of its festivals with existing celebrations, often to try and ease the adoption of the 'new' religion into a society. Perhaps there is something about the human condition here, we like things to be easy and tangible. Natural theology takes the observable world and attempts to make sense of its apparent chaos through belief and ritual, but as we continue to expand and classify the observable things which affect our lives, is there any room left for God?

As real, living, embodied people, we find it easiest to understand things that we can see and touch; an invisible but omnipresent God is hard for us to wrap our brains around. I believe in a God who has experienced that humanity first hand in the person of Jesus, but who was not constrained by the laws of the physical world in the way that we are.

In my life I have seen God bring green shoots out of apparently barren situations. There is chaos and uncertainty, things we cannot see, touch or understand. But as you see the signs of spring around Toft this month, may they remind you that our world is also full of life and hope

- Rev'd Barnabas Leeke

Sewing, Knit and NatterOur next meeting will be **Wednesday May 22nd** (NOT 29th) in the MethodistChapel, 10.30 -12.30. New members
welcome.For further information please contact Lucy
(262948) or Sally (262895).



THE CHURCH IN TOFT DIARY

TOFT METHODIST CHAPEL

has not wintered well with the torrential rain finding its way through the slates into the church, with resulting enormous levels of work for rather few workers to clear up, dehumidify etc. The cost of re-roofing is high and the number of Methodists quite low, even when part of the Local Ecumenical Partnership. Over the coming months much consideration will be given as to whether the Chapel can survive and there may be a call for help if it is decided to retain the building. If it is forced to



close, the community will lose a valuable asset where the choir, the Guides and Rangers, the Warm Hub meet regularly and various organisations use it on a less regular basis including Fireside, Toft Historical Society and so on. Many of the village have Methodist roots – indeed it has been a non-conformist village for several centuries.

I am not asking for help at this moment but giving you information as the now quite small and ageing congregation consider the future.

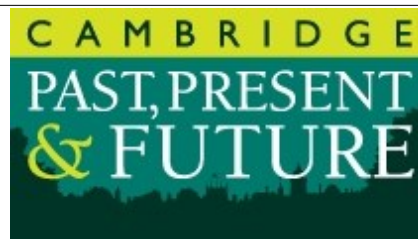
Ann Mitchell, Churchwarden St. Andrew's



We are very sad to record the death of **Pauline Jacklin** who has been part of so many events in the village over the years. Her funeral is at the crematorium on May 1st at 2.30pm. A full obituary next month.

Election Candidates & the Cambourne to Cambridge Bus Road

There is a massive amount of development being proposed for Cambridge and national government is taking a major role in determining how much development takes place, where, when and the infrastructure that will also be needed. At the moment there is no political mandate for this. As the general election approaches, we think it is important that all the political parties set out what they will do and what role their local candidates will play.



Some of the prospective candidates for South Cambridgeshire faced questions from Coton village last week, including whether or not they support building a bus road through Coton Orchard. You can watch their responses at: https://www.youtube.com/watch?v=AYhgJIH_hlg

A new video was premiered at this event, which explains about the route of the bus road and the damage it will cause and about an alternative more environmentally friendly bus scheme to get people quickly from Cambourne to Cambridge. Click https://www.youtube.com/watch?v=Su_yMJOkuF4 to watch.

Our councils expect to press forward with the bus road in a few months' time, which will trigger a public inquiry. We will take part in the inquiry to stop the bus road by making the case for a more environmentally friendly bus scheme. We have had amazing support for the fundraising appeal to pay for the costs of this.

Donate to the Save the Coton Green Corridor <https://www.cambridgeppf.org/save-the-green-corridor>

Toft Parish Council

Clerk: Ben Stoehr (clerk@tpc.toft.org.uk)

30 West Drive

Highfields Caldecote

Cambridge, CB23 7NY Tel: 01954 210241

Councillors	Phone	E-mail
<i>Chairman:</i>		
Martin Yeadon	263663	cllr.yeadon@tpc.toft.org.uk
Emma Darbyshire	07763 463234	cllr.darbyshire@tpc.toft.org.uk
Elaine Miles	262255	cllr.miles@tpc.toft.org.uk
Stephen Collinson	07521 912734	cllr.collinson@tpc.toft.org.uk
Christine Watson.	07730 941946	cllr.watson@tpc.toft.org.uk

The Council is your locally elected Council at the first tier of local government. Meetings are open to the public and are usually held on the first Monday of each month (excepting August) at the Toft People's Hall in School Lane starting at 7.00pm.. The Council's website can be found at: <https://tpc.toft.org.uk>

Notices of meetings and agendas are published on the Parish Council Noticeboard near the bus shelter together with minutes, which can also be viewed at www.toft.org.uk. Among other things, the Council considers local planning applications for the planning authority, the South Cambridgeshire District Council; provides the local recreation area, the People's Hall, litter bins, dog waste bins and the bus shelter; arranges for local verge cutting on behalf of the Cambridgeshire County Council and works with that authority to ensure the maintenance of local footpaths.

Next Meeting: The Parish Council Annual meeting will take place in The People's Hall on Monday 13th May 2024 and will be preceded at 7.00pm by the William Eversden Charity Meeting (Allotments Charity). All Welcome.

The Parish Council met on 8th April 2024 at 7.00pm. We are still looking to recruit another member to the Parish Council and if you are interested and would like to know more, please contact Cllr. Yeadon Tel: 263663 or email: cllr.yeadon@tpc.toft.org.uk

Apologies were received from Cllrs Harris and Watson who were out of the Parish.

There were no declarations of interest nor requests for dispensations.

The minutes of the last meeting were approved.

Cllr. Darbyshire confirmed that the application for a village-wide 20mph zone had been submitted and we are awaiting the outcome.

Cllr. Miles confirmed that a request for residents to complete the Wildlife Survey, if they hadn't already

done so, had been put into the Calendar and forms are available at the village shop.

There was nothing to report from the Assets walk except that the noticeboard which displays a village map opposite the green needs some renovation which Cllr. Yeadon has offered to do.

To date, a proposal from the manufacturer for a new climbing frame has not yet been received.

Regarding the Queen's Platinum Jubilee area, the quotation for the fencing was approved. The quotation for grass cutting of this area has not yet been received.

The quote for the refurbishment of play equipment was approved.

A request for funding from Toft Friends of Bourn Brook had been received and the Parish Council is very pleased to support this project and the request was approved.

The finance report was considered and the payment of bills approved.

There was no play inspection report to consider. The new music equipment, which has been recently installed, has been well received and it was agreed that two mallets for the drum should be purchased. It was pointed out that the Glockenspiel has a very good range and it is possible to pick out tunes such as "Amazing Grace" and "Swing Low Sweet Chariot.

There were no urgent matters to consider.

There were no planning applications to consider and the Parish Council had no comments on the Tree works applications.

Regarding Members items, Cllr. Yeadon reported that he had fixed the glass panes in the bus shelter.

Cllr. Miles reported that a section (known as a trombone) on a gate latch leading from the field on Brookside into the adjacent meadow has become detached. However, as the latch still works and secures the gate, it was decided not to pursue this matter.

It was reported that the two new Parish Council noticeboards, one of which is for the Birdlings estate, are due for delivery around the end of March.

Cllr. Miles reported two persistent water leaks outside 3 Mill Lane and 2 St. Andrew's Cottages and these are to be reported. The meeting closed at 7.40pm.



TOFT SOCIAL CLUB NEWS

The Club is holding a **Pudding and Games Evening** on Saturday 25th May – come along and have a pudding, and then spend the rest of the evening playing games – both board games and some interactive Wii games on the big screen! Or just come along for the games! Puddings just £3 – tickets on sale from the Club. Doors open at 7pm.

Film Night is on Saturday 18th and we will be showing 2017 film “**The Mercy**”, starring Colin Firth – it tells the true story of amateur sailor Donald Crowhurst and his solo attempt to circumnavigate the globe. The struggles he confronted on the journey while his family awaited his return is one of the most enduring mysteries of recent times. Doors open at 7:30pm and the film starts at 8:00pm.

Tickets are on sale for **Smith and Brewer** who perform in Toft on Friday 3rd May – they are a close harmony singing, guitar playing duo - with their joyous harmonies, marvellous guitar playing and wit, they are a joy to watch - be sure not to miss this gig.

Toft Art is on Thursday 2nd, **Toft Quiz** on Thursday 9th, **Carpet Bowls** on Friday 10th, **Open Mic / Music Night** on Saturday 11th, **Table Tennis** on Thursday 16th and **Toft Bingo** on Thursday 23rd.

We are open on every Thursday and Friday, and most Saturdays – see the website (<https://toftsocialclub.org.uk>) for full details. To keep up to date why not sign up for our weekly "What's On" emails via the website: <https://toftsocialclub.org.uk/mailling.php> or keep in touch via our Facebook page: <https://www.facebook.com/ToftSocial>

Keep up to date here:

www.toftsocialclub.org.uk

FOLLOW US ON FACEBOOK: <https://www.facebook.com/ToftSocial>

BUILD YOUR OWN HEDGEHOG HOUSE

- We know that hedgehogs are becoming an endangered species in our landscape for all sorts of reasons. Our Wildlife survey showed that Toft folk kept lots of ‘highways’ in fences and hedges so hedgehogs can move around and forage for food but that there are not many hedgehog houses for shelter. So, if you can, here are some simple instructions to make one.
- Get a sturdy box (wood or plastic) with a removable lid. It needs to be big enough for a hedgehog to fit in - a plastic storage box is a popular choice.
- Create a hedgehog-sized hole at the bottom of one of the sides of your box. It should be about 13cm square so the hog can get in and out safely. You can also install a tunnel to prevent cats or foxes stealing the food. Cover the edges of the hole with duct tape to make sure there are no sharp bits that could hurt your hedgehogs.
- Put in some shallow dishes of hedgehog-friendly food and water inside the box. Hedgehogs will eat wet cat food or dog food or cat biscuits, as well as, “Hedgehog Food” which you can buy from pet shops. Make sure you don’t put out too much food, as what you are providing is supplementary to their natural diet.
- Best time to put out food is late evening. Clear away any leftovers in the morning and refill your dishes every evening - or for as long as the food is being eaten. Make sure to wash your hands/wear plastic gloves and thoroughly wash the feeding dishes, as hedgehogs have been known to spread diseases.
- Never feed hedgehogs milk or bread as they can't digest them and it upsets their stomachs. Also, be aware that putting any food out will attract all sorts of wildlife, not just hedgehogs – this includes predators.
- Don't forget to add your roof. Put the lid on top of the box and place a brick or two on top of the lid. This will stop a fox – or your own dog or cat - tipping the box up to get at the food or dragging it away.
- Don't worry if a hedgehog doesn't move in right away – they are so scarce these days that it may take time. And remember that you won't see any activity from October/November through to March/April, when they're hibernating.
- Best time to watch: Very quietly as the sun goes down, go out and sit somewhere within view of the box and hopefully you'll be rewarded with a view of this snuffling, grunting little beauty!

(Adapted from the Cambridgeshire and Peterborough Future Parks Accelerator Project)



The Spring Feast is here!

Over the coming weekend, 3rd-5th May, it's the annual Toft Spring Feast. The theme is 'Nurturing and protecting nature in Toft'.

Friday 3rd

Toft Social Club, 7.30pm: singing duo Ben Smith and Jimmy Brewer.

Saturday 4th

10.00am: Working party to inspect the wildlife of **Bourn Brook**. Meet at the bridge on Brookside near the junction with School Lane. Children under 14 years of age must be accompanied by an adult. If you are planning to come, contact janetebbit@icloud.com or ring 01223 262309.

2.00-2.30pm Toft People's Hall: Maypole dancing workshop for all ages.

3.00-4.30pm Toft People's Hall: Exhibition of nature photography, including images by award-winning photographer Ann Miles. Also, learn about the conservation of Bourn Brook.

3.00-4.30pm Toft People's Hall: 30-minute video about nature in and around Toft, shown on a loop basis every half hour from 3pm to 4.30pm; drop in at any time.

Toft Social Club, 7.30pm: 'slow session'. Traditional folk musicians practise tunes from 7.30pm, followed by an informal music session from 9pm onwards. Bar open.

Sunday 5th

11.45: annual parish walk and picnic. Assemble at the Methodist Chapel; walk the footpaths to Frogs Hall farm for a picnic.

2.15pm, Toft village green: Maypole dancing for all ages.

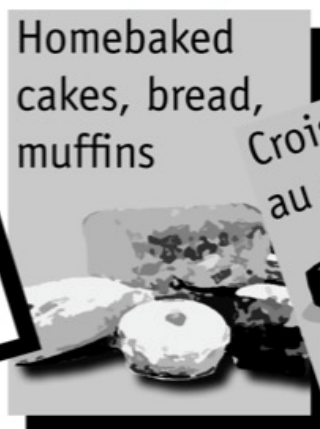
3.00pm, St Andrew's church: well-blessing and informal thanksgiving. Tea-party.

THE BIG TOFT BREAKFAST

Local & FAIRTRADE PRODUCE

**Toft People's Hall
Sunday 2 June**

9.00am-12.00 noon



**Come, eat and enjoy a great big breakfast
that does you good...and does good to others**

Proceeds will be divided between Fairtrade and Farm Africa

**MORE HELP IS URGENTLY NEEDED
TO MAKE THIS A GREAT SUCCESS**

contact: linda.hollow@btconnect.com or Jane on 01223262309



Wildlife Trust for Beds, Cambs & Northants

Wildlife Trust BCN West Cambridgeshire Hundreds Update: May 2024

Climate change is here and now, and it is significantly affecting your local nature reserve. Changes are happening faster than species can adapt. It is making the work of The Wildlife Trust for Beds, Cambs and Northants, enhancing habitats and biodiversity and people's enjoyment and understanding of wildlife, even more challenging. The topic is huge, but here are some local impacts.

Hotter drier summers - Wildlife is stressed, reproduction reduced, and species are more susceptible to disease. There is a greater risk of fire. Wet areas are at greater risk of drying out.

Warmer wetter winters - The window we have to do woodland management is reduced, making it difficult and more expensive to employ contractors, and harder for staff and volunteers to complete essential tasks. Footpaths are becoming wider and more de-vegetated, and this is degrading the important "edge" habitat of woodland rides. Site closures, aiming to protect species on the edges of increasingly muddy footpaths, are more frequent and longer.

Chaotic seasons - The timing of things like migration, hibernation, reproduction, and emergence, can be linked to day length or temperature. This causes issues when the temperature is not what it should be for the time of year. Insect emergence is more flexible and often linked to temperature, but the development of reproductive organs and migration behaviour in birds is more influenced by day length. Chicks may hatch before their food is available. Butterflies may emerge before their foodplant. Hibernating species may wake up early and find limited food available.

Bluebells may decline as they are less able to adapt their time of emergence to unpredictable springs. Oak and ash trees can vary their leaf burst by 6 weeks or more, but bluebells can only adjust by around 3 weeks. Over time, this may mean areas of our woodlands become too dark for bluebells to thrive, and the "edge" habitat near wide paths and open areas will become more important.

Migrating species may pause in their journey due to cold weather, meaning their breeding season is reduced.

What are we doing?

Sometimes closing our sites is necessary to protect fragile ecosystems under increasing pressure. The bar for closures may change as ecosystems become more fragile.

Our landscape-scale conservation approach means we are helping to make the land in between our nature reserves more useful for species that may need to shift their range.

We protect and manage nature reserves which store carbon in soil and vegetation, and provide safe havens for biodiversity. Across our patch we manage over 100 sites.

We have some nationally important sites which act as significant carbon sinks (eg Great Fen and Strawberry Hill)

We teach people about climate change, why it is important, and how they can reduce their impact.

We study the effects of climate change and how they can be mitigated through our Research and Monitoring programme, and with partnerships with universities.

We stand up for wildlife.

Please consider how you impact your local nature reserve, because nature is in trouble.

Keep dogs on leads - Respect site closures - Walk elsewhere when paths are muddy - Don't have BBQs on our sites - Use official entrances and stick to the middle of paths

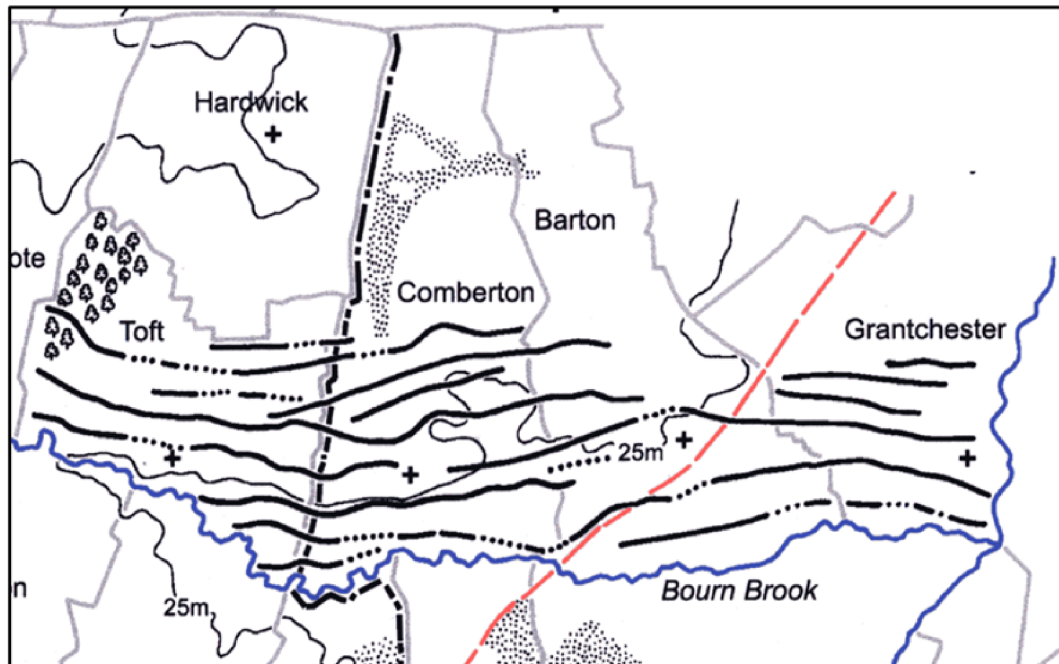
Please support the Wildlife Trust movement by becoming a member, volunteering, supporting an event, or donating.

The West Cambridgeshire Hundreds are a group of nature reserves owned and/or managed by the Wildlife Trust for Beds Cambs and Northants: Hardwick, Gamlingay, Hayley, and Waresley and Gransden Woods, and Cambourne Nature Reserve.

Bourn Valley Fields (2)

In last month's Calendar we described how, in pre-medieval times, the land in Toft Parish was divided by alignment features, about 200 metres apart and roughly parallel running North-South from the Bourn Brook to the top of the ridge (then part of Toft but now in Hardwick Parish).

In the Medieval Period, agriculture became dominated by common-field cultivation where two or more huge field areas were cultivated in common by the inhabitants of each *vill* (parish). In the Bourn Valley this transformation from Iron Age fields demarcated by alignments to a common-field system seems to have occurred in 700-900 AD when the Anglo-Saxon Kings of Mercia controlled what is now Cambridgeshire and the Bourn Valley appears to have been part of an estate controlled from Haslingfield.



S. Oosthuizen (2006)

The increasing demands of regional kings for more grain forced a move towards more extensive arable farming on common-fields and most parishes were largely given over to crop production. However, research by Prof. Susan Oosthuizen (Cambridge) indicates that, in the Bourn Valley, the transition to common-fields proceeded in several steps. At least four of the Valley communities (Toft, Comberton, Barton and Grantchester) appear to have collaborated to set up an intensive arable system on the best land for crops (the lower slopes), leaving the stream side and upper slopes for grazing and woodland. Oosthuizen calls this intermediate arable system a "proto-common field". She describes the creation of a series of common boundaries (solid and dotted black lines in diagram) across the four parishes running roughly parallel to the stream and at right angles to the Iron Age cross-valley alignments (described in the previous Calendar). These commons were, like the alignments, roughly 200 m apart and allowed the areas in between to be divided into ploughable strips (furlongs) and fully converted to intensive grain production.



“

**It's more than just
broadband,
it's keeping
communities and
families close and
connected no matter
the distance.**

”



Just Visit:

countybroadband.co.uk/connectivemoments



Our Chalet Switzerland 2024

Cuppa & Cake

Please join us for
a drink &
homemade cake
Sat 25th May
2pm-4pm



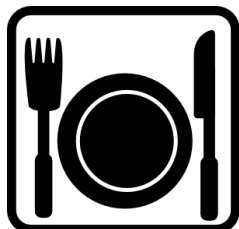
*All proceeds go
to 1st Barton
Guides to
support our
guides heading
to Switzerland
this August.*

Toft Peoples Hall
School Ln, Toft, Cambridge CB23 2SA



A Thankyou

Irene Brown and family would like to thank our wonderful neighbours for their help and support following the recent sudden passing of our beloved Roland. Thank you also for the many cards and letters of condolence, they are a great comfort in these difficult times.



"Has anyone ever been to The Crown in Little Walden?" Blank looks all round from the Fork Talk squad, with a couple of 'Never heard of its' thrown in for good measure. 'Well, I heard it's worth a trip.' said our informant, somewhat gnomically. Well - I mean, what more encouragement did we need? A quick phone call to alert the owners to the imminent arrival of gastric royalty and we were off.

If you decide to follow in our footsteps - and you should - you'll need to allow around three quarters of an hour by car. However it's a journey worth making, passing through some pretty countryside on the run-in to the village itself and if you can find Little Walden (which is, indeed, little), you've found The Crown. It stands on the village high street and is the only pub in the place. A tiled effort with white-washed brick walls, it looks late eighteenth-century to my untutored eye - but I could easily be a half-century out, either way. Round the back, there's a roomy car-park with a small courtyard beer garden. Inside, it is wall-to-wall Ye Olde Englishe Country Pubbe - racks of pewter tankards, beams, a lot of dark wood panelling, horse brasses - oh, and more beams. There were also, on the day we went, wall-to-wall customers, but an efficient team behind the bar was keeping things well under control. The beer here, for those with an interest, is what they call 'rack-stilled'. Basically, there are no hand pumps and the beer is drawn straight from the barrel. As it's a Free House, they're not tied to any one brewer's output and on our visit, products from Woodfordes and Greene King were on offer, although, we were told, this changes regularly.

Despite the crush, they found a table for us but on the strength of this one visit, I'd advise you to book if you want to be certain of a seat. It was a Sunday and The Crown was majoring, as you'd expect, on the traditional Sunday roast. That was fine by me. I'd already worked up an appetite by opening a few bills and lifting a heavy kettle earlier in the day and was in the mood for a hearty plateful. But you could go for

anything else they had on the menu if you wanted. This (the menu) is nothing if not brief, but it does manage to cover something for most tastes, including vegetarians, children and so on. They also offer - a nice touch - reduced plates (and prices) for those who aren't in the right frame of mind for a full pig-out. Feeling distinctly unadventurous, I went for roast pork while the rest of our gang rang the changes on lamb, beef or chicken, with one exception, a Cauliflower cheese enthusiast. Prior to that I'd also pitched into a 'soup of the day' offering. This was a minestrone and I realised, two-thirds of the way through it, that however big your eyes are, they need to be matched by your stomach. The soup was a meal in itself. Nothing daunted, I ploughed through it and after a much needed pause, waded in to the roast pork. It needs to be said that this is not fine dining. It's Mum's home cooking - not a 'jus' or an artful collection of coulis dabs to be seen. But if good sized portions of wholesome food with a plentiful variety of fresh vegetables is your thing, you're going to like The Crown.

With me as a well-stuffed spectator, the remainder of the team zeroed in on the desert menu - often an area of weakness in eateries. Not here, though. The meringue in an Eton Mess was pronounced 'definitely not brought in' and the unwary diner who had opted for a scoop of ice-cream found that they must be using a coal-shovel for their 'scoop' as something the size of a football was delivered.

I wondered why the place was quite so full. It wasn't a bank holiday, or Mothering Sunday, or...anything, really - just a random Sunday in April. Then I looked at the prices. We were paying between fifteen and eighteen pounds for our main courses. You can easily add five or ten pounds onto that for most places in or near Cambridge.

I enjoyed my time at The Crown. We dawdled over coffee but the place was still buzzing when we finally left in the late afternoon and they'd shown no inclination to kick us out. It's true it's a bit of a drive. So, is it worth it? Yup.

Wheelie Bin Collections For May

(N.B. This schedule may be subject to change)

Black Bin:

Thurs 2nd May

Thurs 16th May

Thurs 30th May

Blue/Green Bin

Thurs 9th May

Thurs 23rd May

Notice to Advertisers

Advertisements are published quarterly. Copy for inclusion in the next available edition of the Calendar **must** reach us by 17th July 2024 at the *very latest*. Advertisements will **NOT** be published unless full payment has been received in advance. Please note: *We are currently unable to accept PDF file types*. Quarter-page adverts **MUST** be Portrait-style, half-page adverts **MUST** be Landscape-style. In the first instance, advertisers should contact **Jean Verney** at:

calendaradstoft@gmail.com to discuss their requirements.

✕ USEFUL PHONE NUMBERS

Alcoholics Anonymous: 0845 769 7555

Anglian Water (for sewage): 08457 145 145

(Emergency number for burst water pipes: 01223 706050)

Ashcroft Veterinary Surgery: 01954 210250

Bourn GPs' Surgery: 01954 719313

Cambridge AIDS help-line: (01223) 508805

Cambs County Council: 0345 045 5200

Cambridge Dial a Ride 01223 506335

Cambridge Water: 01223 706050

Care Network Cambridgeshire 01954 211919.

Citizens Advice Bureau: 0844 848 7979

Comberton GPs' Surgery: 01223 262500

Comberton Village College: 01223 262503

Community Warden (Age UK CAP) 07812 495997

County Councillor 07968 264637

CVC Community Education: 01223 264721

District Councillor: 01954 210040

Household Waste/Pest Control: 0345 045 0063

Lifespan Health Care, Family and Child Team: 01223 264460

Member of Parliament: Phone 01223 603677

Meridian Primary School: 01223 262423

Police: 101 (Emergencies: 999)

(Local Beat Officer is PCSO Sam Kennedy)

Road/Pothole Reporting: 0345 045 5212

Street Lighting: 0800 7838 247

Street Cleaning: 03450 450 063

South Cambs District Council: 01954 713 000

South Cambs Fire and Rescue: 01480 444 500

Toft Car Scheme: 07790 171710

Trading Standards: 0345 0455206

UK Power Networks (Emergencies): 0800 31 63 105

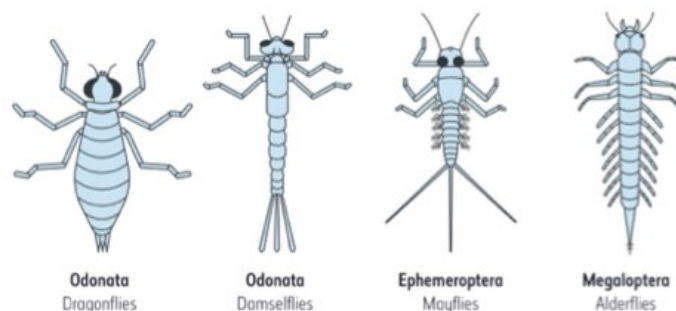
Calling all Friends of Bourn Brook and residents of Toft**River fly kick sampling**

Saturday 4 May at 10.00am

Meet at the bridge on Brookside near the junction with School Lane

Children under 14 years of age must be accompanied by an adult

If you are planning to come please let me know so that we can get organised into groups and sort out equipment.

Contact: janetebbit@icloud.com or ring **01223 262309**

The Calendar is always pleased to receive contributions from readers, advertisers and fund raisers. We reserve the right to edit, amend, abridge or otherwise butcher any submissions to accord with technical or editorial requirements, or sometimes just on a whim. We do not normally accept anonymous contributions or those using pen-names.

Contributors are asked to note that all text formatting is removed from items on receipt. Consider **plain text files** as your first choice where possible. **Please avoid proprietary file types (e.g. PDF, PUB, DOCX, XLS etc) unless you feel it essential.** **Graphics (if you must) are best submitted as PNG files.** Many thanks.

And, finally...

Please remember that contributions for the next issue of the *Calendar* must reach the Editor, Michael Walker, **by 20th May**. Many thanks to all who contributed to this edition. Email: calendareditor@toft.org.uk Post: 33 Egremont Road, Hardwick, Cambridge CB23 7XR Telephone: 01954 211346

ADVERTISEMENTS APPEARING HERE ARE SUPPLIED BY THEIR RESPECTIVE BUSINESSES. NO WARRANTY, RECOMMENDATION OR OTHER MARK OF SECURITY OR APPROVAL IS EXPRESSED BY THE PUBLISHERS OR THEIR AGENTS, NEITHER SHOULD ANY BE INFERRED.



HARDWICK

169 St Neots Road, Hardwick
Cambridgeshire, CB23 7QJ
Tel: 01954 210250

Monday - Friday - 8.30 to 10.30am – 4.30 to 7.00pm

Saturday - 9.00am to 11.00am

Sunday - 10.00am to 11.00am

PAPWORTH

Unit 1, Pendrill Court, Ermine Street North
Papworth Everard, Cambridgeshire, CB23 3UY
Tel: 01480 831615

Monday, Wednesday, Friday - 11.30am to 1.30pm

Saturday - 12.00pm to 1.30pm

Consultations by Appointment Only

www.ashcroftvet.co.uk

Andrina B

the footcare specialist

Providing expert treatment in all aspects of foot healthcare in the comfort of your own home

**Nail Cut • Callus • Athlete's Foot
Hard Skin • Corn Removal
Fungal Infections • Plantar Faciitis
In-Growing Toe Nail • Orthotics
Leg and Foot Massage**

To book your appointment call Andrina on

07966 571 686

or email: andrinab@foot-care.co.uk

www.foot-care.co.uk

Andrina Baldock, Foot Health Practitioner, SAC Dip. FHPP FHPT
Register for Foot Health Practitioners Member

PEASGOOD & SKEATES

THE FAMILY FUNERAL SERVICE

*All types of funeral carried out
with the highest standard of service and care*

617 Newmarket Rd
CAMBRIDGE
01223 415255

164 Histon Rd
CAMBRIDGE
01223 791060



**Also at Sawston, Duxford, Haverhill
and Saffron Walden**

Ask us about Funeral pre-planning and "My Funeral Wishes"

www.peasgoodandskeates.co.uk

ADVERTISEMENTS APPEARING HERE ARE SUPPLIED BY THEIR RESPECTIVE BUSINESSES. NO WARRANTY, RECOMMENDATION OR OTHER MARK OF SECURITY OR APPROVAL IS EXPRESSED BY THE PUBLISHERS OR THEIR AGENTS, NEITHER SHOULD ANY BE INFERRED.



Little Hands Nursery School - Bourn Short Street, Bourn



A private Nursery School specialising in quality preschool care and education for the under fives
 High staff to child ratio, using an individual child centred curriculum
 Flexible booking system for the 08.30am - 4.30pm nursery day
 Optional holiday clubs available

We accept nursery funding giving 15 hours per week of funded nursery sessions for all 3 and 4 year olds and eligible 2 year olds plus 30 funding for eligible families

For further details contact:
 Pam Marsden: nursery manager 01954 710656
 E-mail: lh.bourn@gmail.com

Little Hands is also at Linton, Melbourn and Newton, visit the website at www.littlehands.co.uk



- 👉 Sports injuries
- 👉 Children's feet
- 👉 Diabetes
- 👉 Skin and nail problems
- 👉 Verrucae
- 👉 HCPC registered
- 👉 Plenty of parking

Steamroller Ironing Services



Free pick-up and delivery
 24/48 hr turnaround
 Price: 1lb = £1.75. Minimum = £15
 Established 2002

01223 782161

www.pennfarmpodiatry.co.uk

ADVERTISEMENTS APPEARING HERE ARE SUPPLIED BY THEIR RESPECTIVE BUSINESSES. NO WARRANTY, RECOMMENDATION OR OTHER MARK OF SECURITY OR APPROVAL IS EXPRESSED BY THE PUBLISHERS OR THEIR AGENTS, NEITHER SHOULD ANY BE INFERRED.

Rothwell's Carpet Cleaning

Carpet Cleaning & Stone Floors, Upholstery, Rugs

A few points that make us stand out,

Rothwell's has been in business since 1993

We're an honest local family firm.

Our large truck mounted machines mean more cleaning & drying power for excellent results.

Members of both the NCCA and TACCA.

We will move the furniture.

100% satisfaction or it's FREE.



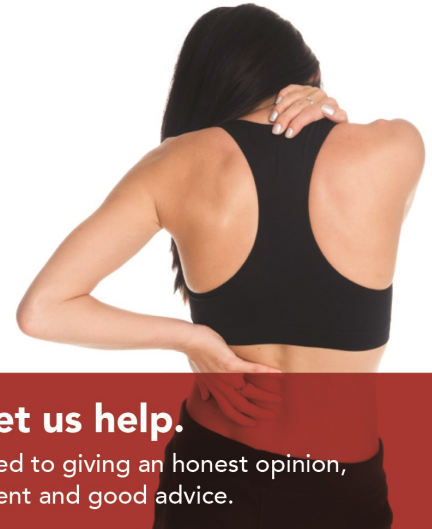
*Call Oliver and Max Campbell
for expert help today.*

01223 832 928 www.Rothwells.biz



CAMBOURNE OSTEOPATHS

Back Pain
Neck Pain
Joint Pain
Headaches
Muscle Spasm
Sports Injuries
Arthritis
& much more



In Pain? Let us help.

We are committed to giving an honest opinion, effective treatment and good advice.

Appointments Mon-Fri
01223 598558

Regus, 1010 Cambourne
Business Park, CB23 6DP

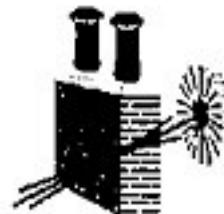
Book online: www.cambourneosteopaths.com
Email: practice@cambourneosteopaths.com

CHIMNEY SWEEP

J. L. Wight

Guild of Master Sweeps

Advice given /
Problems solved



Certificates issued



01954 253315

www.camsweep.co.uk

9 Cow Lane, Rampton