



Toft Village Calendar

Produced and Distributed by St. Andrew's Parish Church

February 2024



DIARY DATES

TOFT FRIENDSHIP CLUB

[Over 50s Club]. 14th February 2.30 Toft People's Hall. An illustrated Talk by Martin Sebborn - **Western Australia** -with no doubt his usual stunning photographs. Visitors always welcome

Sewing, Knit and Natter

Our next meeting will be Wednesday February 28th in the Methodist Chapel, 10.30 -12.30. For further information please contact Lucy (262948) or Sally (262895).

New members welcome!

The Parish Council

Next Meeting: Monday 5th February, 7.00pm in The People's Hall. All Welcome.

The **Toft Peoples Hall** (TPH) committee will be holding an Extraordinary General Meeting (EGM) on Tuesday 13th February 2024 at 7.30pm
Members of the public are welcome to attend.

EDITORIAL

Of all the malodorous malpractices thus far revealed in the Great Post Office Scandal, one has, so far, received little attention. And it's one which, for me at least, has caused an already-dropped jaw to plummet to ankle-level. What, in the name of all that's Holy, is an organisation like the Post Office doing using software that's over a quarter of a century old? In computing terms, this is the equivalent of still running the Carlisle to London mail coach. In their defence, a spokesperson muttered that replacing the entire system would be a major expense and that, in any case, all the old problems had now been ironed out. The system is now 'robust'. Because it's 'cloud-based', so nothing can go wrong. To which, the disinterested user (that's you and me) might well cock a snook whilst wondering why it is that so many arms of the state seem to cling on to second-rate, clapped-out, error-ridden, antiquated software. Only a few years ago the NHS was half-paralysed by a ransomware attack on its collection of whiskery Windows XP systems. At that time, no less than four successive replacement systems (7, 8, 8.1 and 10) had already been released, so it wasn't a case of being just a teensy bit behind the curve.

At this point (and for purposes of comparison) may I mention the supermarket chain Aldi. As recently as a decade back, Aldi was a little-known and even less talked-about niche player in UK retail. It now has over a thousand outlets in this country and is jostling the likes of Sainsburys and Morrisons for market share. So I would guess that it has and needs an IT system every bit as complex and 'robust' as even the Post Office's. And it will need to have developed and installed that system at pace, to keep up with its rate of growth. But here's the difference: Theirs doesn't go wrong. Neither does Tesco's, nor Amazon's, nor a host of others. When was the last time you saw a supermarket check-out point with a cardboard 'Sorry - Out-Of-Order' sign draped across it? Or waited fifty seconds for the antediluvian e-Abacus out in cyber-space to calculate what you owe? Sure, we get empty shelves now and then. But that's almost always due to some floods in Morocco or another tantrum by French Trade Unions. I don't recall it ever being due to suppliers being mysteriously short-changed by 'the system'.

And now we find, courtesy of Which? magazine, that railway ticket machines are overcharging passengers by as much as 52 per cent. What a surprise. Yet another semi-monopoly making a dog's breakfast out of a straightforward transaction - and always, curiously, in their favour, not yours or mine.

There's a theme here. Ultimately, these systems are mandated by people who have no intention of using them themselves and are immune from the consequences. If Barclaycard (for example) start leaking lucre due to an avoidable managerial up-cock, someone gets shown a P45. Has anyone from the Post Office walked the plank yet? Not to my knowledge.

So what can be done? Well, I guess we could wait till ITV make another prime-time docu-drama about the whole thing. I don't mind taking a starring role. But if they'd prefer someone a bit more photogenic, I'd be content with a lesser part. Something like 'Downtrodden Man In Queue'.

The 18 Bus Service Update

The 18 local bus service has improved, writes Cllr *Emma Darbyshire*. 'The switchover from Stagecoach to Whippet was rocky for a while, but things are better now. It's not perfect, and never will be. There will always be times when busses don't run due to staff shortages or when they breakdown, but give it a try. As a regular user of the bus, I have been finding it more reliable lately and the introduction of the Whippet Bus App (available for both Android and Apple devices) is great. This gives you service updates and a quite accurate Bus Tracker map'. Find out more here:

<https://www.whippetbus.co.uk/app/>

After Christmas.

*The turkey's been eaten,
The carols all sung,
The gifts have been open,
The New Year has now begun!*

*The babe in a manger, with
the Nativity set put away,
Still silently sleeping in the hay.
Still precious the memories
Of long gone Christmas days,
When I too was a child
Full of excitement and play!
Waking too early with my sister
And brother, on a long gone,
Far away Christmas day.*

*The Christmas pud's been
eaten
The tinsel is strewn,
The merriment laid aside
A calm hush descends
After Christmastide!*

- Amy Graver

MINISTRY TEAM**THE CHURCH IN TOFT**

St. Andrew's Parish Church

Team Vicar:

Rev David Newton 01223 665654

Assistant Curate: Revd Barnabas Leeke
07787 800 888

Lay Minister: Barbara Preece Tel: 263466

Churchwardens:

Ann Mitchell 262516

John Quenby 263949

Methodist ChurchMinister: Revd Charity Nzegwu
01763 241803

Stewards:

Diana Tebbit 01223 263557

Stephen Acklam 264055

Mrs Pat Morton 264010

SERVICES OF WORSHIP*4th February* 8.30am Holy Communion
(BCP) – Rev Prof Michael Reiss11.00am Covenant Service at the
Methodist Church – Rev Charity Nzegwu*11th February* 11.00 am Holy Communion,
St. Andrew's – Rev. Priscilla Slusar*14th February* ASH WEDNESDAY 7.30pm
Service – Rev Barnabas Leeke*18th February* 8.30am Holy Communion
(BCP) – Rev Prof Michael Reiss11.00am Morning Worship, Methodist
Church – Rev Robert Dolman*25th February* 11.00am Morning Worship
– St. Andrew's - Rev Barnabas LeekeThere will be morning prayer at St.
Andrew's every Wednesday at 9.15 am
(about half-an-hour)Also on Wednesday evenings at 8.00pm,
via zoom a service of compline: ID: 899
215 191 or follow the link: [https://
us02web.zoom.us/j/899215191](https://us02web.zoom.us/j/899215191)Zoom services available at 11.00am
MEETING ID: 823 1147 3640

We have said goodbye and wished David and his family a happy and successful transition to their new life, and so must turn to our life without David, and in deep gratitude that we have such a talented curate to care for us., The short month of February, not quite so short this year, is an odd one, still winter, but the snowdrops are out, it always has Ash Wednesday and half-term – Easter is coming.

Toft Historical Society will begin the month looking back to Toft celebrating! No shortage of material there, this village is a great place to celebrate – in fact young Toby Newton, David's eldest son called St. Andrew's the Party church.

In February 20 years ago we had the exhibition on Farming, past and present, Geoff and Yvonne were running the shop, Ron Meadows was the Calendar editor and we had a monthly coffee morning. We had just signed the Local Ecumenical Partnership between St. Andrew's and Toft Methodist Church. Ten years ago the Calendar was printed, not photocopied, and our present Editor was in the chair; the IW had been formed, the Social Club was producing its full and widely inclusive programme and Toft Historical Society was headed for another Exhibition: All Our Stories – showing our finds of the year before when we had looked for our far past in archaeological digs.

As the proverb says:

Plus ça change, plus c'est la même chose - the more things change, the more they stay the same- thus Toft remains our home, and its community tries to care for and offer all who live here support, friendship, fun, music, help where it is needed and love.

Ann Mitchell

Churchwarden



THE CHURCH IN TOFT DIARY

Cambridge Sustainable Food coordinates emergency food provision efforts in the city in partnership with Cambridge Food Poverty Alliance. The Alliance represents over 25 organisations working on poverty alleviation in the city.

Please keep giving into the boxes in the porch or in the shop and the food will go to CSF. After a Christmas hiatus there will be staple food stuffs in the boxes for anyone in Toft who needs them, PLEASE help yourself.

~~~~~

There will be a four week Lent 'conversation' starting at the end of February on Thursday mornings. If you would like to join us, and you would be most welcome, please contact Barbara Preece or Ann Mitchell for timings.

~~~~~

THE WARM HUB is back on January 8th &

EVERY MONDAY 10.30-12.30

At the Methodist Church



Come and join us for chat, games, friendship and refreshment, all for free. Stay as long or as short time as you like. We would love to see you there, you'll be guaranteed a warm welcome. Feel free to bring a friend.

MESSAGE FROM ELIZABETH HARRISSON: I would like to send my grateful thanks to all those who offered so much help, care and kindness in 2023. It is deeply appreciated. Happy New year to you all - Elizabeth.

Do you have breathing difficulties? Did you know singing can help?

Singing is a great way to improve the way you breathe and get the best from your lung capacity.

The **Cambridge Singing for Breathing** group is meeting online, using Zoom, on Thursday afternoons 2.30 - 4.00pm and we're looking for new members!

Kay Barrett, founder of the group, says:

"You don't need any singing experience to take part - it's all about what it feels like, not what it sounds like. The camaraderie of the group, the guided relaxation, the breathing exercises and the singing are so much appreciated by everyone and the health benefits transfer over into daily life. ."

Do I have to pay?

Those who can afford it are invited to give a £3.50 donation each week, but this is not essential - we want everyone to be able to come.

Do I have to come along every week?

We know that appointments, sickness, family commitments and such can get in the way! Just come along when you can.

I have Long Covid, can I join?

The gentle pace, breathing exercises and relaxation can be very beneficial, but do check with your doctor or respiratory physio, especially if your symptoms are severe.

How do I join?

Simply email singingforbreathingcambridge@gmail.com or call Mary on 07972645473 for more information and to receive the Zoom link each week.

You can find out more at www.singingforbreathing.wordpress.com or on Facebook: www.facebook.com/singingforlunghealthcambridge - Mary Denn

Toft Parish Council

Clerk: Ben Stoehr (clerk@tpc.toft.org.uk)

30 West Drive

Highfields Caldecote

Cambridge, CB23 7NY Tel: 01954 210241

Councillors	Phone	E-mail
<i>Chairman:</i>		
Martin Yeadon	263663	cllr.yeadon@tpc.toft.org.uk
Emma Darbyshire	07763 463234	cllr.darbyshire@tpc.toft.org.uk
Elaine Miles	262255	cllr.miles@tpc.toft.org.uk
Stephen Collinson	07521 912734	cllr.collinson@tpc.toft.org.uk
Christine Watson.	07730 941946	cllr.watson@tpc.toft.org.uk
Rebecca Harris	07796 176 333	njharris262@gmail.com

The Council is your locally elected Council at the first tier of local government. Meetings are open to the public and are usually held on the first Monday of each month (excepting August) at the Toft People's Hall in School Lane starting at 7.00pm.. The Council's website can be found at: <https://tpc.toft.org.uk>

Notices of meetings and agendas are published on the Parish Council Noticeboard near the bus shelter together with minutes, which can also be viewed at www.toft.org.uk. Among other things, the Council considers local planning applications for the planning authority, the South Cambridgeshire District Council; provides the local recreation area, the People's Hall, litter bins, dog waste bins and the bus shelter; arranges for local verge cutting on behalf of the Cambridgeshire County Council and works with that authority to ensure the maintenance of local footpaths.

Next Meeting: Monday 5th February, 7.00pm in The People's Hall. All Welcome.

The Parish Council met on 8th January 2024 at 7.00pm. We are still looking to recruit another member to the Parish Council and if you are interested and would like to know more, please contact Cllr. Yeadon Tel: 263663 or email: cllr.yeadon@tpc.toft.org.uk

A member of the public informed the meeting that someone had reversed into the fence around the car park and 2 posts have been damaged. This is to be reported to Cambridgeshire County Council with a request that the fence be repaired and the general area improved.

It was pointed out that the hedge along the Snicket near the High Street is very overgrown. The PC informed the meeting that this has been reported to Cambridgeshire County Council who have written to the householder who is responsible for this hedge.

There were no apologies or declarations of interest.

The minutes of the last meeting were approved with the proviso that under 7.3 it should read "its improvement plan" not "its improved plan".

In addition to the survey for Wildlife which is being launched in the village, Cllr. Darbyshire has been researching the purchase of bird nest boxes which may be of interest to folk who haven't currently got any wildlife provision but would like to get involved. She has been in touch with the Men's Sheds organisation and there is a branch in Comberton which uses facilities at Madingley Hall to produce items such as these and they were very positive about this initiative. She has also looked at various websites and, of course, the RSPB and will

report further at the next meeting. Please read the article in the February edition of the Calendar for more detailed information.

Regarding the play area, Cllr. Watson informed the meeting that she is awaiting delivery of the music play equipment for the Playground and this will be installed as soon as possible after its arrival. Regarding the replacement of the climbing frame, a new one has been chosen but a quote is awaited from the company for the "wet pour" surface. The quote for the refurbishment of other items in the playground was agreed. Cllr. Watson also pointed out that the hedgerow was overgrown and a number of trees had lower branches that needed removing. Cllr. Yeadon offered to cut back where possible.

It was agreed that no LHI bid would be made for 2024-25 but that we would go ahead with the proposal for 20mph for the whole of the village. Residents' opinion on this is to be sought through a survey and further information will be posted by Cllr. Darbyshire in the Calendar.

It was agreed that we go ahead with the tree removal plan at the Queen's Platinum Jubilee area. Cllr. Yeadon is to obtain a quote to replace the fencing at the back. A free Cherry tree has been ordered to replace the dead tree on the green outside 4, High Street.

Cllr. Miles tabled the Wildlife Survey which was approved and this is to be distributed as soon as possible to every household in the village.

We were unable to progress the discussion of the noticeboard due to the absence of Cllr. Collinson.

The Parish Council had no objections to the installation of double yellow lines on both sides of Burdeley's Way, Comberton.

The finance report and payment of bills was approved.

There were no matters regarding play inspection reports.

A pane of glass in the bus shelter had been reported damaged and Cllr. Yeadon reported that he had removed this. His impression was that this damage and indentations on other panes of glass had been caused by pellets.

The date for the Annual Parish Meeting and the AGM for the William Eversden Charity (Allotments) has been set for 13th May 2024.

There were no planning or tree works applications to consider.

Under members items, Cllr. Miles reported that a parishioner had reported seeing a horse being ridden on the public footpath leading from Miller's Road towards Caldecote. It was agreed that the sign prohibiting this, which had been installed some time ago and torn down, would be re-instated.

Two trees which are down in Armshold Lane and the carcass of a dead deer between the footpath and the brook close to the bridge on the B1046 have all been reported to Cambridgeshire County Council via the "Report It" website. Please note that anyone can report issues on this website: <https://www.cambridgeshire.gov.uk/residents/travel-roads-and-parking/roads-and-pathways/roadworks-and-faults>

Cllr. Yeadon drew attention to the Community Governance Review which would give Toft residents the opportunity to decide whether the Parish boundary should continue to include the new Birdlings estate or whether, given its proximity to Comberton, the boundary should stop at the western side of the Birdlings. Please contact Cllr. Yeadon if you have any views on this issue.

Cllr. Miles reported that the car park was looking very shabby with a lot of litter. It was decided earlier in the meeting that help would be sought from Cambridgeshire County Council. With regard to the ditch outside Comberton Village College, which is full of rubbish, it was agreed that it would be better to wait until all the road works had been completed before any attempt to have this cleared was made.

VOLUNTEERS URGENTLY NEEDED AT BOURN WINDMILL

PLEASE HELP KEEP THIS LOVELY OLD WINDMILL OPEN TO THE GENERAL PUBLIC ON ITS OPEN DAYS!

Volunteers are urgently needed to join our friendly team for the planned open afternoons at the newly restored Bourn Windmill, a popular and interesting destination for so many residents and is just a short distance away from Toft. There is parking at the mill for volunteers. Volunteers of all abilities and age are most welcome.

We need help with:

- helping serve refreshments,
- helping taking the money and giving out leaflets,
- and helping to guide groups of visitors around the mill.

Training will be given for the guiding role and there will be an opportunity to shadow experienced guides initially.

If you can only help on a few of the dates, we would still be very interested to hear from you.

Saturday 11th May 2-4.30 p.m. ~ Sunday 12th May 11am - 1p.m. and/or 2-4.30 p.m.

Sunday 23rd June 2-4.30 p.m. ~ Sunday 28th July 2-4.30 p.m.

Sunday 18th August 2-4.30 p.m. ~ Sunday 15th September 2-4.30 p.m.

Contact: Kate Armstrong on cfm.armstrong@gmail.com or 07926 359098



Friends of Bourn Brook

On 18th January we met to discuss how we are going to proceed with our investigation into the health of Bourn Brook.

Walking the banks

There is a cohort of willing volunteers who will look for any outfalls feeding into the brook, report wildlife sightings and spot any invasive species that they come across during their walks along the banks.

Testing for pollution

Our citizen scientists will be testing for pollutants as soon as we have obtained the specialised equipment and when have identified the best sites in the brook for taking samples.

Recording our data

We hope to devise a method whereby the data we gather can be transferred to our page on the village website <https://toft.org.uk/bourn-brook/>

When we have the webpage up and running everyone should be able to see the results of our observations.

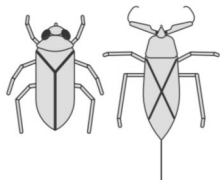
Counting the invertebrates

River fly are a great indicator of the health of rivers. In spring we hope to organise a village river fly count. If you would like to join us or have expertise that we might find useful please get in touch.

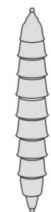
email: jane@tebbitdesign.co.uk or tel. 262309 for information



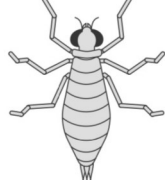
Coleoptera
Water beetles



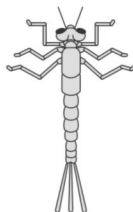
Hemiptera
True bugs



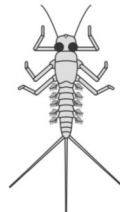
Diptera
True flies



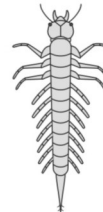
Odonata
Dragonflies



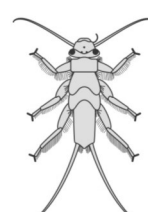
Odonata
Damselflies



Ephemeroptera
Mayflies



Megaloptera
Alderflies



Plecoptera
Stoneflies



Trichoptera
Caddisflies



TOFT SOCIAL CLUB NEWS

Tickets are now on sale for the forthcoming music gigs – we have the wonderful **Galliard Trio** on March 23rd, which will be an evening of music followed by a meal. Then on 3rd May we have **Smith and Brewer**, a fabulous close harmony singing, guitar playing duo. Details and tickets on the website.

Film Night is Saturday 17th and we will be showing 2023 film “Indiana Jones & The Dial Of Destiny” starring Harrison Ford, Phoebe Waller-Bridge and Antonio Banderas in the fifth instalment of this swashbuckling series of films. Finding himself in a new era, approaching retirement, Indy wrestles with fitting into a world that seems to have outgrown him. But as the tentacles of an all-too-familiar evil return in the form of an old rival, Indy must don his hat and pick up his whip once more to make sure an ancient and powerful artefact doesn't fall into the wrong hands. Doors open at 7:30pm and the film starts promptly at 8:00pm. Annual Film Club membership is £12 for the year, or evening membership is £2.50.

Note for your diaries – we will be showing “**Oppenheimer**” in March.

Toft Art is on Thursday 1st – if you would like to find out more, either pop along or contact us at art@toftsocialclub.org.uk. Doors open at 8pm.

Food on Friday is on the 2nd - we'll be offering a Chicken or Vegetarian Tikka Masala served with rice, poppadom and chutney. This will be a rich & aromatic curry, not overly spicy! Doors open at 7pm. We operate on first come, first served – so come early to avoid disappointment!

Toft Quiz Night is on Thursday 8th - teams of up to 6, just £1 per team member. Cash prizes! Doors open at 8pm.

Carpet Bowls is on Friday 9th, doors open at 8pm – come along and give this family friendly game a go.

January's **Open Mic Night** was a huge hit, with people up and dancing! The next one is on February 10th with a mix of performers offering music and words. Free entry – doors open at 8pm.

Table Tennis is on Thursday 15th – we are keen to know what we can do to make this evening more popular – why not come along and tell us.

Toft Bingo is on Thursday 22nd – cash prizes – all welcome, doors open at 8pm.

Saturday 24th is the next “**Slow Session**” - a music evening to join in with! Everyone is welcome to join in / listen - free entry. The bar will be open as normal.

The Club is always open every Thursday and Friday from 8pm, and most Saturday evenings – please see the website for details. Why not join us for a warm welcome and enjoy a drink and meet up with friends.

To keep up to date why not sign up for our weekly “What's On” emails via the website, here: <https://toftsocialclub.org.uk/mailling.php>

Advance notice: We will be holding our AGM on Thursday 21st March – more details next time. If you would like to raise a matter or join the committee, please contact us via the website: <https://toftsocialclub.org.uk/contact.php>

Keep up to date here:

Website: <https://toftsocialclub.org.uk>

Follow us on Facebook: <https://www.facebook.com/ToftSocial>

Your Committee is: : Martin Sebborn (Chairman), Roger Thorogood (Vice Chairman), Gill Collett (Treasurer), Sonia Cox (Secretary), Koran Collett, Ron Gouldstone, Liz Tomes, James Nairn, Brian Roberts, Angela Unsworth, Jean Stewart and Katrina Holmes.

Keep up to date here:

www.toftsocialclub.org.uk

FOLLOW US ON FACEBOOK: <https://www.facebook.com/ToftSocial>



The **Toft Peoples Hall (TPH)** committee will be holding an **Extraordinary General Meeting (EGM)** on Tuesday 13th February 2024 at 7.30pm

Members of the public are welcome to attend.

Also, the TPH committee are seeking a new chairperson. Duties are not onerous. The committee is responsible for the running of and the fabric of the Toft Peoples Hall.

The committee comprises four full members plus about 4 representatives from regular users of the hall. We meet once every 2 months to discuss what, if anything needs doing and agree on arrangements to meet our remit.

Anyone who feels able to help us and fill this vacancy should apply to the secretary, Graham Gifford at gifford.graham@gmail.com

Toft's Bird Nest Box Provision

By now you will have received a Wildlife survey asking you to indicate what current provision, if any, you might have to help create a Wildlife Map for Toft. Following on from this, as the bird nesting season runs roughly from February until August, now is the time to start installing bird nest boxes in your garden, or cleaning existing nest boxes, ready for the birds to move in.



For anyone who doesn't have a nest box and who would like to get involved by installing one in their garden, we have listed a few useful online resources/websites, which are at the end of this article, from which you can either purchase a ready-made nest box or find advice on how to build your own. Don't be too disappointed if the birds don't immediately take a fancy to your nest box. It can take a year of them snooping and checking it out before they trust it enough and feel happy to nest, so, be patient, and keep your fingers crossed. In general, nest boxes should be positioned somewhere relatively quiet, and faced between North and East. Installing one on the side of your house or on a suitable garden tree trunk is the ideal location.

The most popular nest boxes are designed for Bluetits, Great Tits, or Robins, but some species that are really struggling and need our help are Swifts, Starlings, House Martins, House Sparrows, Kestrels and Owls, therefore, you might think about finding a nest box suitable for these species. (see Swift Man below)

Finally, it would be interesting for everyone to see photographs of Toft's nest box provision, so if you would like to send a photograph of your nest box, new or existing, please email it to cllr.darbyshire@tpc.toft.org.uk who will upload it to the TPC website in the coming months for everyone to view.

General guide to bird nest boxes:

<https://www.rspb.org.uk/helping-nature/what-you-can-do/activities/all-about-nest-boxes>

How to build a nest box:

<https://www.rspb.org.uk/helping-nature/what-you-can-do/activities/build-a-birdbox>

<https://www.wildlifetrusts.org/actions/how-build-bird-box>

Swift Man

If you would like to purchase a handmade nest box for Swifts, then look no further than John Stimpson from Wilburton and read on the following website, this article about his amazing achievement for supporting Swifts and other species.

<https://www.theguardian.com/environment/2022/jan/20/the-man-who-built-homes-for-60000-swifts-aoe>

If you would like to place an order, John can be contacted by email or telephone;

Email: j.stimpson1@btopenworld.com or telephone: 01353 740451

The Men's Sheds

For general ready-made bird boxes, the Men's Sheds groups are a great cause to support and there is now one in Comberton. The Men's Sheds organisation supports mental health and wellbeing for men. Find out more about them and how to purchase nest boxes and other handmade items at: <https://menssheds.org.uk>



Wildlife Trust for Beds, Cambs & Northants

Wildlife Trust BCN West Cambridgeshire Hundreds Update: Feb 2024

The Wildlife Trust BCN is an evidence-based wildlife conservation charity. We use standard techniques to manage our sites, such as coppicing, mowing, and grazing, which have years of scientific backing, and we also collect long-term data to study trends. Our

ecologists use a host of techniques to survey including transects, drones, and camera traps. On selected sites we carry out research to ensure specific interventions are working.

One aspect of the work ongoing in the nationally important Waresley and Gransden Woods is the reprofiling of the main ride which is happening in sections over several years. This wide path has become compacted and de-vegetated with use, so that water sits in the middle making it very muddy. A section was worked on in autumn 2021 and access restricted to allow the path to re-vegetate. The re-profiled section was made higher in the middle, with compacted soil broken up and the ditches cleared on either side. The aim is to create a better draining and more vegetated path that can be more easily managed.

To assess the impact on plant species and study recovery time, our Research and Monitoring Team are carrying out surveys. These surveys are comparing the same site over time, and the reprofiled area with a section that has yet to be worked on.

We found that plants re-colonised very quickly. By June 2022, the ride had mostly greened up. By 2023, the vegetation was long enough to need mowing, and was full of plants including lots of flowering nectar sources. The numbers show very little difference in the total plant species before and after management:

Section	Year	Total number of plant species recorded
Re-profiled	2021	71
	2022	68
	2023	72
Control	2021	61
	2022	53
	2023	59

There were a few differences in the species list, but we haven't lost any that are a cause for concern, and a few species have re-appeared that haven't been recorded in over 15 years. We will continue to monitor the situation, especially in relation to the amount of bare ground which is greatly affected by footfall in the winter.

Muddy paths are an increasing issue in our woodland nature reserves, made worse by warmer wetter winters and higher visitor numbers. Many sensitive plants live in the sheltered but sunny ride edges which are damaged when paths are widened in muddy conditions. We often close sites in winter to reduce the impact. You can help by following signs if sites or paths are closed, wearing appropriate footwear to keep to the middle of paths, and by considering walking elsewhere when paths are muddy.

Our essential habitat management work continues through site closures so you will still see staff and volunteers accessing nature reserves.

Email: rebecca.neal@wildlifebcn.org

Facebook: [@BeccaBadgerWTBCN](https://www.facebook.com/BeccaBadgerWTBCN)

Wildlife Trust BCN main Facebook/Twitter: [@wildlifebcn](https://www.facebook.com/wildlifebcn)

The West Cambridgeshire Hundreds are a group of nature reserves owned and/or managed by the Wildlife Trust for Beds Cambs and Northants: Hardwick, Gamlingay, Hayley, and Waresley and Gransden Woods, and Cambourne Nature Reserve.

Save the date for **THE BIG TOFT BREAKFAST**

**At The People's Hall on Sunday 2 June
9.00am-12.00 noon**

Fairtrade, local produce and homebaked goodies



Would you like to help? Please email your details to linda.hollow@btconnect.com if you can help by baking, cooking, waiting, setting up or clearing, making drinks etc. We'd love to include you in this fun event.



*Come, eat and enjoy a great big breakfast that does you good...
...and does good to others*

Proceeds will be divided between Fairtrade and Farm Africa

TOFT TELEPHONE BOX SEED SWAP

Now is the time to start growing your flowers and vegetables from seed.

Pick up and swap seeds or if you don't have seeds donate spare change into the Farm Africa box at Toft Shop.

For next to nothing you could have beds full of easy to grow beautiful annual flowers, pyramids of delicious climbing beans and beds of salad leaves for summer.

The seed swap is situated in the telephone box near to Toft Shop, make a call when you're passing next.



Grow a **MONSTER** tomato like this 1.4 kilo specimen from seed in the seed swap now.



toft historical society

A carol is not just for Christmas.

The word *carol* comes from Old French *carole* and means a dance with people holding hands in a circle and singing. In medieval times, there were carols for all seasons, not just Christmas. One such example is the Cambridgeshire May Carol, which is still sung each year in Toft at the Spring Feast:

*A branch of May I have brought you,
And at your door it stands.
It's nothing but a sprout
But it's well budded-out
By the work of Our Lord's hand.*

Gradually, carols became mostly associated with Christmas. Carol singing in Toft takes place each year and has taken different forms in different locations over the years, both indoors and out.



Mill Lane Christmas 1999



Carol singing on the corner of Mill Lane and Glebe Close in 1999 and on the village green in 2010.



Toft Session sing carols at the Social Club 1999.



Carols in the churchyard at St Andrew's church 2023.



are proud to present

Toft People's Hall Saturday 23rd March 2024 at 6pm

The Galliard Trio



*An evening of Classical Music
including a light supper*

Tickets £15 including Light supper, Lasagne Alfredo or Lasagne Verde (vegetarian).

Doors open 5.30 pm Concert starts 6.00 pm Meal follows at c.7.00 pm

Coming to Toft People's Hall in 2024

SMITH AND BREWER

<https://smithandbrewer.com/>

May 3, 2024

All tickets available online from December 1:

<https://toftsocialclub.org.uk/tickets.php>



Comberton Library

your.library@cambridgeshire.gov.uk

Tel: 0345 045 5225 www.cambridgeshire.gov.uk/library

Our opening hours (excluding bank holidays etc.)

Monday 10am – 1pm

Wednesday 10am – 1pm and 2.30pm – 5.30pm

Friday 2.30pm – 5.30pm

Saturday 10am – 1pm

Happy New Year 2024!

“A new heart for a New Year, always!” – Charles Dickens

Coming up!

January Book Sale: Saturdays 13th and 27th. Books of all ages!

What is E – resources? Libby, Borrow Box, Ancestry etc. Did you know that these resources are available? Our digital buddies at this event will show us how to access and learn more on January 22nd at 11.30 – 12.30. Come along all are welcome!

A Festival of Stories will take place on Monday 26th February, 10.30 -11.00. Rose Feather, a Storytelling an event for up to 8 children from birth-2 years old along with their parents & carers. A celebration of National Storytelling Week.

Astronomy Event - Friday 23rd February, 3.00 - 3.45. This is in half term week. An astronomer from the Institute of Astronomy, Cambridge will be coming to Comberton library to give a talk and answer questions on astronomy.

Science week event on Wednesday 13th March, 3.00 - 4.30. Come along and discover what Comberton library is doing in Science week?

Comberton Library Events:

Knit and Natter group continue to meet in Comberton Library, 10.30am - 11.30am, January 22nd. February dates: 5th and 19th. March dates: 4th and 18th and then every other Monday. Newcomers are warmly welcome.

Come and sing along, *Rhymetime* 10.30am – 11am for children age between 0-4 years of age. January dates: 15th and 29th. February dates: 12th and 26th. March dates: 11th and 25th.

Every Saturday, *Its Lego Time* with Duplo - come and have fun building! All children accompanied by an adult. It is a free event.

Comberton library a warm place with free Wifi, good quality resources, computer access and more. We look forward to seeing you there.

Wheelie Bin Collections For February

(N.B. This schedule may be subject to change)

Black Bin:

Thurs 8th Feb

Thurs 22nd Feb

Blue/Green Bin

Thurs 1st Feb (Blue ONLY)

Thurs 15th Feb

Thurs 29th Feb (Blue Only)

Notice to Advertisers

Advertisements are published quarterly. Copy for inclusion in the next available edition of the Calendar **must** reach us by 17th April 2024 at the *very latest*. Advertisements will **NOT** be published unless full payment has been received in advance. Please note: *We are currently unable to accept PDF file types*. Quarter-page adverts **MUST** be Portrait-style, half-page adverts **MUST** be Landscape-style. In the first instance, advertisers should contact **Jean Verney** at:

calendaradstoft@gmail.com to discuss their requirements.

✂ USEFUL PHONE NUMBERS

Alcoholics Anonymous: 0845 769 7555

Anglian Water (for sewage): 08457 145 145

(Emergency number for burst water pipes: 01223 706050)

Ashcroft Veterinary Surgery: 01954 210250

Bourn GPs' Surgery: 01954 719313

Cambridge AIDS help-line: (01223) 508805

Cambs County Council: 0345 045 5200

Cambridge Dial a Ride 01223 506335

Cambridge Water: 01223 706050

Care Network Cambridgeshire 01954 211919.

Citizens Advice Bureau: 0844 848 7979

Comberton GPs' Surgery: 01223 262500

Comberton Village College: 01223 262503

Community Warden (Age UK CAP) 07812 495997

County Councillor 07968 264637

CVC Community Education: 01223 264721

District Councillor: 01954 210040

Household Waste/Pest Control: 0345 045 0063

Lifespan Health Care, Family and Child Team: 01223 264460

Member of Parliament: Phone 01223 603677

Meridian Primary School: 01223 262423

Police: 101 (Emergencies: 999)

(Local Beat Officer is PCSO Sam Kennedy)

Road/Pothole Reporting: 0345 045 5212

Street Lighting: 0800 7838 247

Street Cleaning: 03450 450 063

South Cambs District Council: 01954 713 000

South Cambs Fire and Rescue: 01480 444 500

Toft Car Scheme: 07790 171710

Trading Standards: 0345 0455206

UK Power Networks (Emergencies): 0800 31 63 105

BOURNPLAYERS
present

CITY OF ANGELS

A MUSICAL COMEDY
a jazzy homage to film noir, Hollywood and pulp fiction detectives

**Thursday 14th,
Friday 15th,
Saturday 16th
March 2024
at 7:30pm**

**PERFORMANCE HALL
Comberton Village
College**

Book Music Lyrics
Larry Gelbart Cy Coleman David Zippel

TICKETS ON SALE AT www.bournplayers.org.uk

CAMBRIDGE
**PAST, PRESENT
& FUTURE**

Iron Age & Archaeology Walk
Wed 7 Feb 10.30am – 12.30pm.
Free, donations welcome.
Join one of our wardens on a gentle guided walk around the park to see and learn about Wandlebury's Iron-Age history.
Meet at the noticeboard in the car park. No need to book. Please wear footwear and clothing for being outdoors.

The Calendar is always pleased to receive contributions from readers, advertisers and fund raisers. We reserve the right to edit, amend, abridge or otherwise butcher any submissions to accord with technical or editorial requirements, or sometimes just on a whim. We do not normally accept anonymous contributions or those using pen-names.

Contributors are asked to note that all text formatting is removed from items on receipt. Consider **plain text files** as your first choice where possible. **Please avoid proprietary file types (e.g. PDF, PUB, DOCX, XLS etc) unless you feel it essential.** **Graphics (if you must) are best submitted as PNG files.** Many thanks.

And, finally...

Please remember that contributions for the next issue of the **Calendar** must reach the Editor, Michael Walker, **by 20th February**. Many thanks to all who contributed to this edition.
Email: calendareditor@toft.org.uk Post: 33 Egremont Road, Hardwick, Cambridge CB23 7XR Telephone: 01954 211346

ADVERTISEMENTS APPEARING HERE ARE SUPPLIED BY THEIR RESPECTIVE BUSINESSES. NO WARRANTY, RECOMMENDATION OR OTHER MARK OF SECURITY OR APPROVAL IS EXPRESSED BY THE PUBLISHERS OR THEIR AGENTS, NEITHER SHOULD ANY BE INFERRED.

**HARDWICK**

169 St Neots Road, Hardwick
Cambridgeshire, CB23 7QJ

Tel: 01954 210250

Monday - Friday - 8.30 to 10.30am – 4.30 to 7.00pm

Saturday - 9.00am to 11.00am

Sunday - 10.00am to 11.00am

PAPWORTH

Unit 1, Pendrill Court, Ermine Street North
Papworth Everard, Cambridgeshire, CB23 3UY

Tel: 01480 831615

Monday, Wednesday, Friday - 11.30am to 1.30pm

Saturday - 12.00pm to 1.30pm

Consultations by Appointment Only

www.ashcroftvet.co.uk

Andrina B

the footcare specialist

Providing expert treatment in all
aspects of foot healthcare in
the comfort of your own home

**Nail Cut • Callus • Athlete's Foot
Hard Skin • Corn Removal**

Fungal Infections • Plantar Faciitis

In-Growing Toe Nail • Orthotics

Leg and Foot Massage

To book your appointment call Andrina on

07966 571 686

or email: andrinab@foot-care.co.uk

www.foot-care.co.uk

Andrina Baldock, Foot Health Practitioner, SAC Dip. FHPP FHPT
Register for Foot Health Practitioners Member

PEASGOOD & SKEATES

THE FAMILY FUNERAL SERVICE

*All types of funeral carried out
with the highest standard of service and care*

617 Newmarket Rd
CAMBRIDGE
01223 415255

164 Histon Rd
CAMBRIDGE
01223 791060



**Also at Sawston, Duxford, Haverhill
and Saffron Walden**

Ask us about Funeral pre-planning and "My Funeral Wishes"

www.peasgoodandskeates.co.uk

ADVERTISEMENTS APPEARING HERE ARE SUPPLIED BY THEIR RESPECTIVE BUSINESSES. NO WARRANTY, RECOMMENDATION OR OTHER MARK OF SECURITY OR APPROVAL IS EXPRESSED BY THE PUBLISHERS OR THEIR AGENTS, NEITHER SHOULD ANY BE INFERRED.



Little Hands Nursery School - Bourn Short Street, Bourn



A private Nursery School specialising in quality preschool care and education for the under fives
High staff to child ratio, using an individual child centred curriculum
Flexible booking system for the 08.30am - 4.30pm nursery day
Optional holiday clubs available

We accept nursery funding giving 15 hours per week of funded nursery sessions
for all 3 and 4 year olds and eligible 2 year olds plus 30 funding for eligible families

For further details contact:
Pam Marsden: nursery manager 01954 710656
E-mail: lh.bourn@gmail.com

Little Hands is also at Linton, Melbourn and Newton, visit the website at
www.littlehands.co.uk



- Sports injuries
- Children's feet
- Diabetes
- Skin and nail problems
- Verrucae
- HCPC registered
- Plenty of parking

Steamroller Ironing Services



Free pick-up and delivery
24/48 hr turnaround
Price: 1lb = £1.75. Minimum = £15
Established 2002

01223 782161

www.pennfarmpodiatry.co.uk

ADVERTISEMENTS APPEARING HERE ARE SUPPLIED BY THEIR RESPECTIVE BUSINESSES. NO WARRANTY, RECOMMENDATION OR OTHER MARK OF SECURITY OR APPROVAL IS EXPRESSED BY THE PUBLISHERS OR THEIR AGENTS, NEITHER SHOULD ANY BE INFERRED.

Rothwell's Carpet Cleaning

Carpet Cleaning & Stone Floors, Upholstery, Rugs

A few points that make us stand out,

Rothwell's has been in business since 1993

We're an honest local family firm.

Our large truck mounted machines mean more cleaning & drying power for excellent results.

Members of both the NCCA and TACCA.

We will move the furniture.

100% satisfaction or it's FREE.



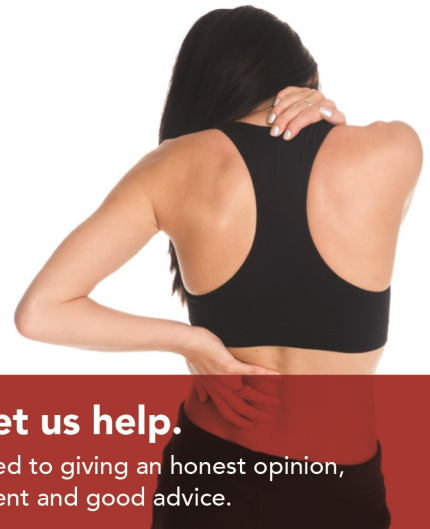
*Call Oliver and Max Campbell
for expert help today.*

01223 832 928 www.Rothwells.biz



CAMBOURNE OSTEOPATHS

Back Pain
Neck Pain
Joint Pain
Headaches
Muscle Spasm
Sports Injuries
Arthritis
& much more



In Pain? Let us help.

We are committed to giving an honest opinion, effective treatment and good advice.

Appointments Mon-Fri
01223 598558

Regus, 1010 Cambourne
Business Park, CB23 6DP

Book online: www.cambourneosteopaths.com
Email: practice@cambourneosteopaths.com

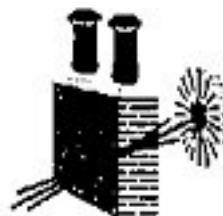
CHIMNEY SWEEP

J. L. Wight

Guild of Master Sweeps

Advice given /
Problems solved

Certificates issued



01954 253315

www.camsweep.co.uk

9 Cow Lane, Rampton